



Holman Drive, UB2

£335,000

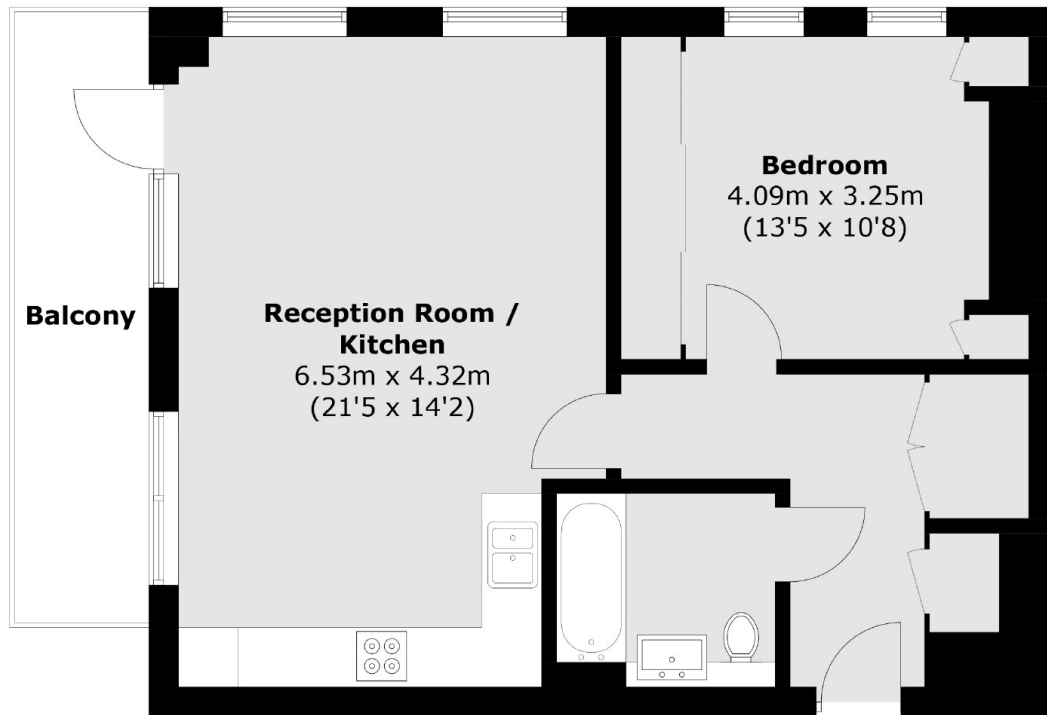
This contemporary one-bedroom apartment is nestled within a secure block, conveniently located less than a mile from the Hanwell Elizabeth line. Boasting ample storage space, a stylishly designed family bathroom, and a generously sized terrace facing south/west. The property is offered with no onward chain.

Located close to local shops, schools, amenities, Hanwell station and the Elizabeth Line. Further transport links provide easy access to Ealing and Greenford Underground and Heathrow.

Features

- Lift Access
- Abundant Storage
- Long Lease
- Modern Spec
- Chain Free

Holman Drive,
Southall, UB2



Total area (approx.): 56.3 sq. m (606.0 sq. ft)
Balcony: 8.3 sq. m (89.3 sq. ft)

Dexters

Northfields
140 Northfield Avenue
London
W13 9SB
Sales
020 8545 8588

Energy Rating: B. We aim to make our particulars both accurate and reliable. However they are not guaranteed; nor do they form part of an offer or contract. If you require clarification on any points then please contact us, especially if you're traveling some distance to view. Please note that appliances and heating systems have not been tested and therefore no warranties can be given as to their good working order.

 **RICS** | Regulated
Estate Agent
and Letting Agent

dexters.co.uk