



## St. Marks Road, W7

£600 Per week

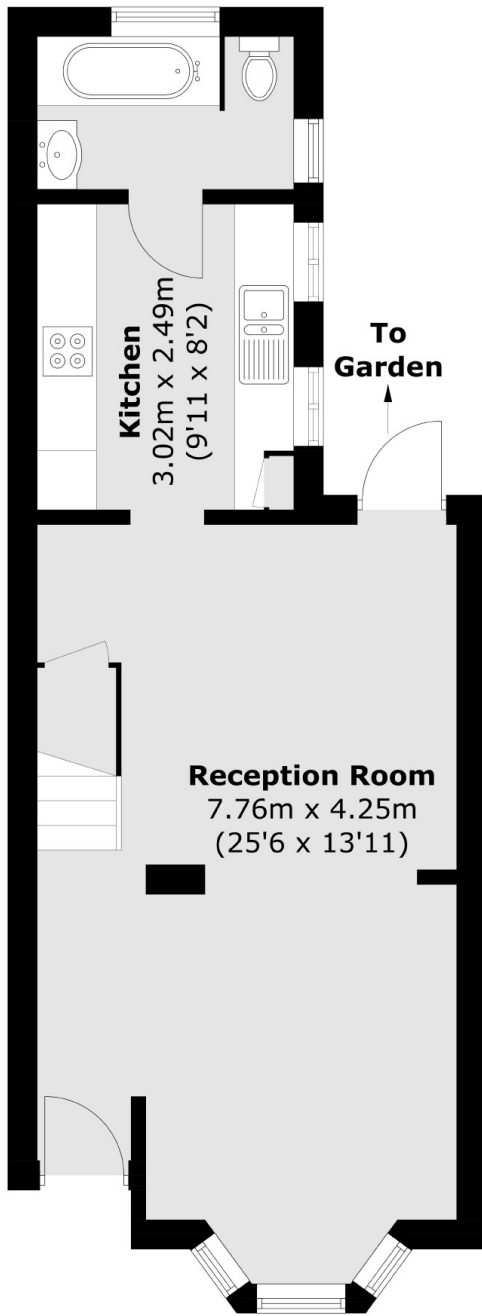
Charming Victorian cottage boasting three bedrooms, a large reception and newly refurbished interior. Embrace classic elegance and modern comfort in this delightful home, close to local parks and Elthorne Park High School, making it suitable for a family of professional sharers.

St Marks Road is situated off Boston Road close to Saint Marks Primary School, less than a miles from Hanwell Station on the Elizabeth Line.

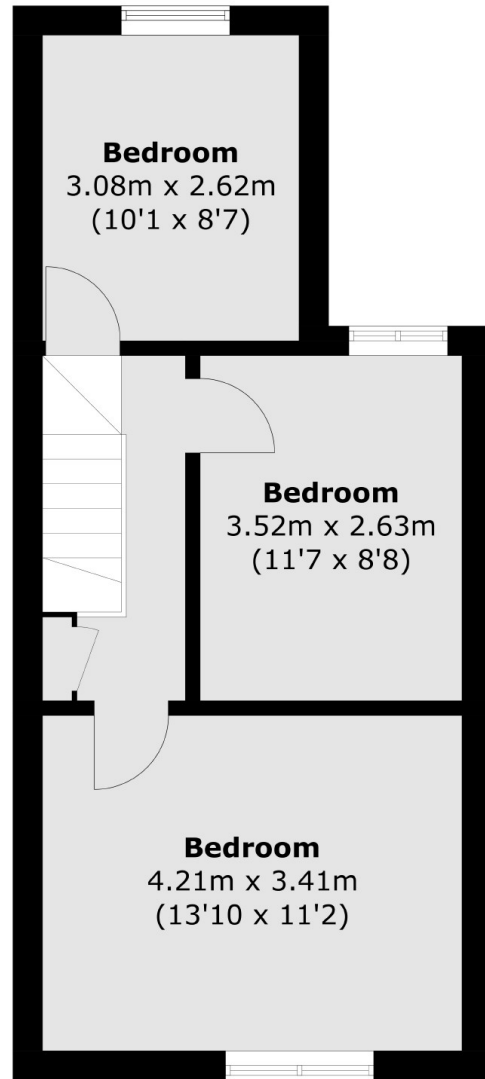
### Features

- Victorian Style Cottage
- Three Bedrooms
- Newly Refurbished
- Close to Station
- Large Garden
- Part-Furnished

St. Marks Road,  
London, W7



**Ground Floor**



**First Floor**

Total area (approx.): 81.8 sq. m (880.4 sq. ft)