



Midhurst Road, W13

£762 Per week

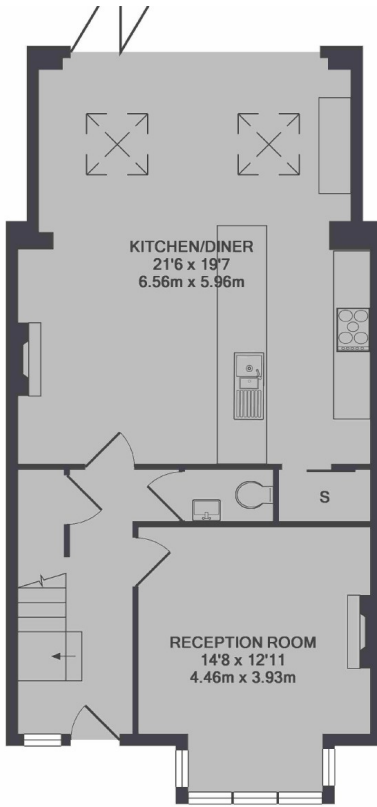
This refurbished five bedroom family home with period features has been stylishly revamped to meet the needs of a family looking for quality living space. Close by to the local parks of Northfields and is inside the Fielding School catchment area.

The property is over half a mile away from Northfields tube station (Piccadilly) and under a quarter of a mile from Fielding Primary School.

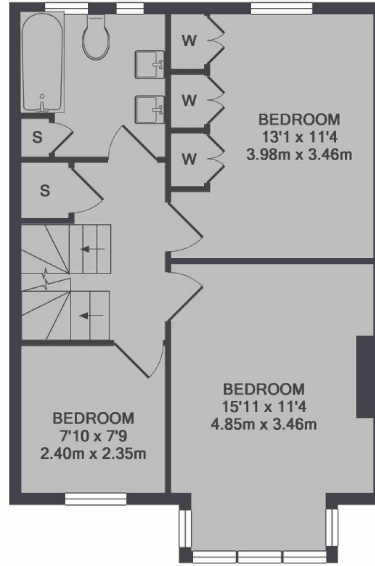
Features

- Five Bedroom House
- Two Bathrooms
- Two Receptions
- Double Glazing
- Private Garden
- Fielding Primary School

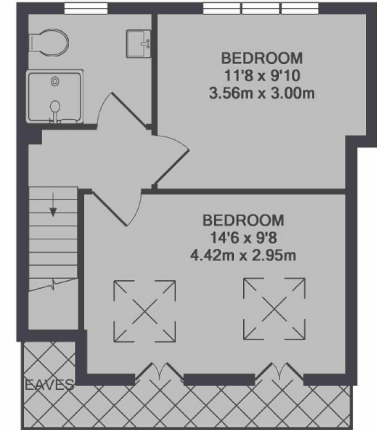
Midhurst Road, London, W13



GROUND FLOOR



1ST FLOOR



2ND FLOOR

TOTAL APPROX. FLOOR AREA 1619 SQ.FT. (150.4 SQ.M.)