



Townholm Crescent, W7

£730,000

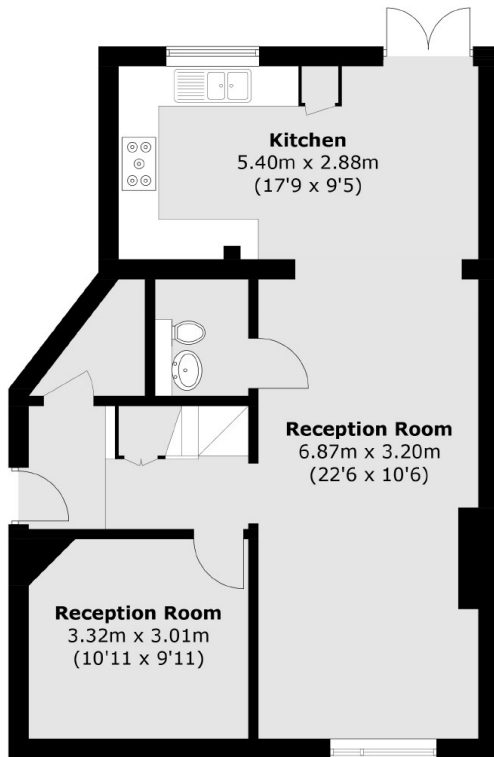
Impressive three bedroom semi detached family home which has been carefully renovated and maintained with great attention to detail. Entrance hall, Guest W.C. Two interconnecting reception rooms, well fitted kitchen, front reception room with the three bedrooms and the modern bathroom upstairs.

Located close to an excellent range of local schools, shops and Elthorne Park as well as close proximity to both Hanwell Elizabeth line station and Boston Manor for the Piccadilly line.

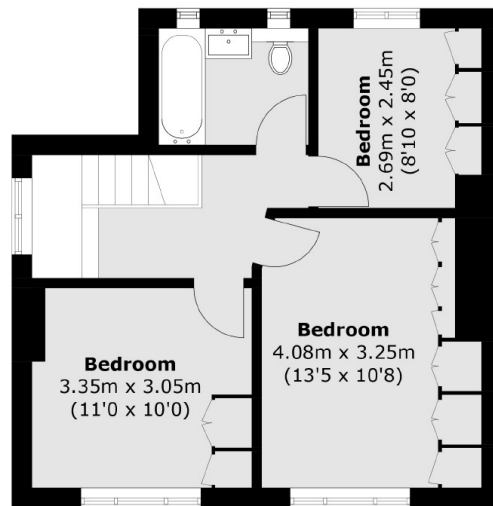
Features

- Semi detached
- Excellent condition
- Three reception rooms
- Off street parking
- Good sized rear garden
- Close to outstanding schools

Townholm Crescent, London, W7



Ground Floor



First Floor

Total area (approx.): 106.0 sq. m (1,140.9 sq. ft)