



Murray Road, W5

£780,000

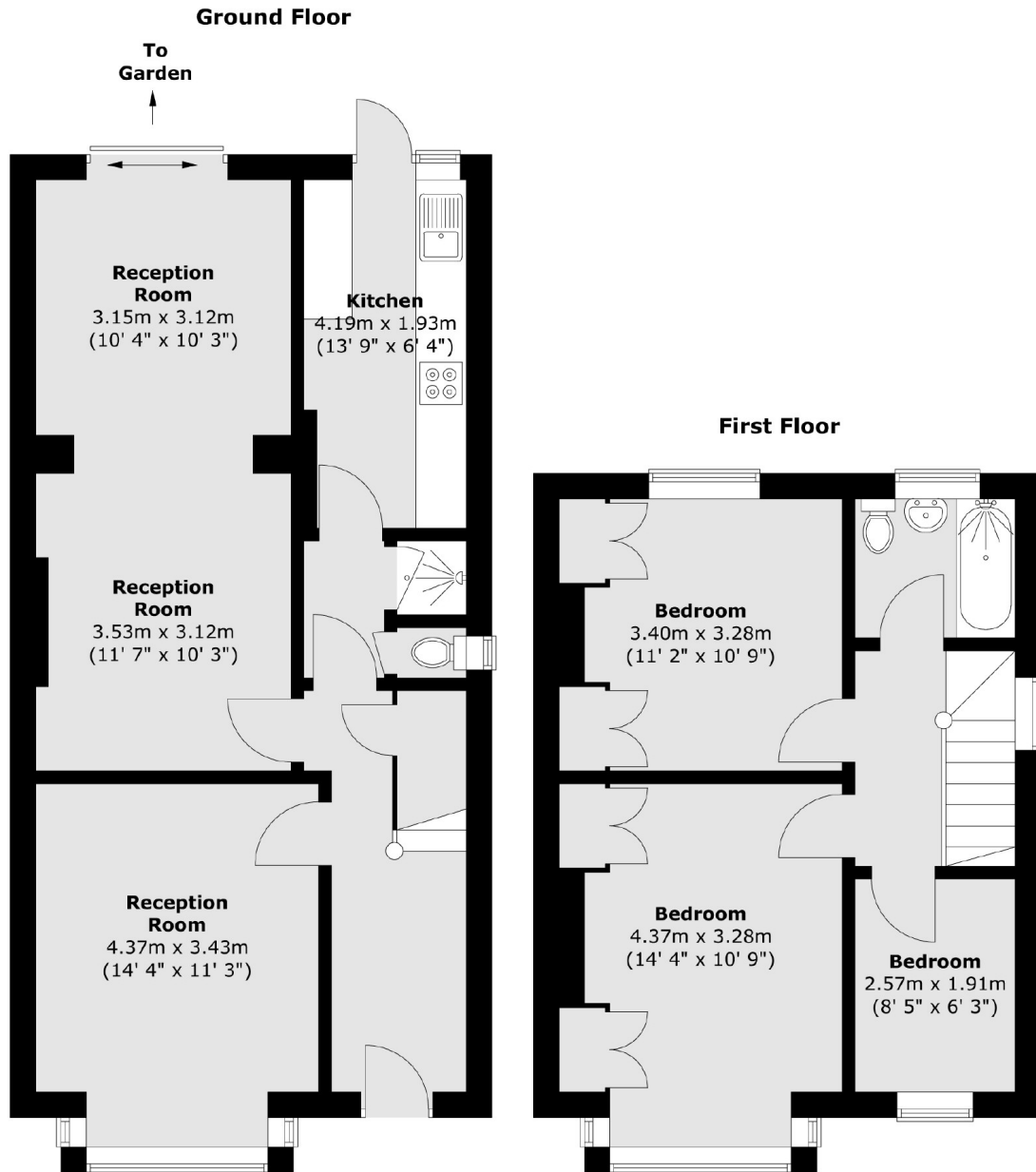
Three bedroom end of terrace house which is priced to reflect the need for updating. Already extended to the rear, there is scope to extend into the loft and create a fabulous forever home.

Benefits from a circa 80ft rear garden and enviable location close to excellent schools including Ealing Fields High School. Offered with no onward chain.

Features

- End of Terrace
- Three Bedrooms
- Extended Ground Floor
- 80 ft. Garden
- Excellent Schools
- No Chain

Murray Road, London, W5



Total area (approx.) : 99.6 sq. m (1072 sq. ft)