



Devonshire Road, W5

£920,000

Edwardian three bedroom house located in this excellent Northfields location. Retains period features throughout and benefits from a South facing garden.

Ideally located close to an excellent array of local shops, parks and cafés. Close to Northfields station (Piccadilly Line) and excellent local schools. There is a choice of highly rated schools including Mount Carmel, Little Ealing and Ealing Fields High School.

Features

- Family Home
- Three Bedrooms
- Two Bathrooms
- School Catchment
- Landscaped Garden
- Sought After Location



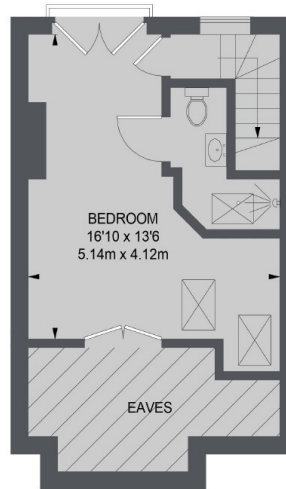
Devonshire Road, W5

Set on the South side of this sought after Northfields street. The entrance hall leads through to two interconnecting reception rooms with feature fireplace, kitchen and a useful conservatory.

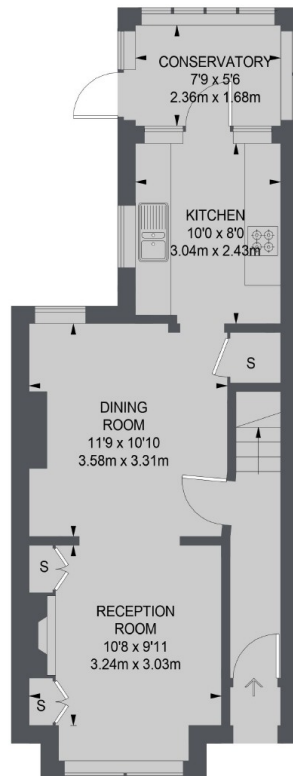
Extended into the loft, upstairs there are three double bedrooms (master with ensuite) and the main bathroom. Viewing is strongly recommended.



Devonshire Road, London, W5



SECOND FLOOR



GROUND FLOOR



FIRST FLOOR

TOTAL APPROX. FLOOR AREA
(EXCLUDING EAVES STORAGE)
1111 SQ. FT. (103.18 SQ. M.)