



## Bakery Walk, UB6

£375,000

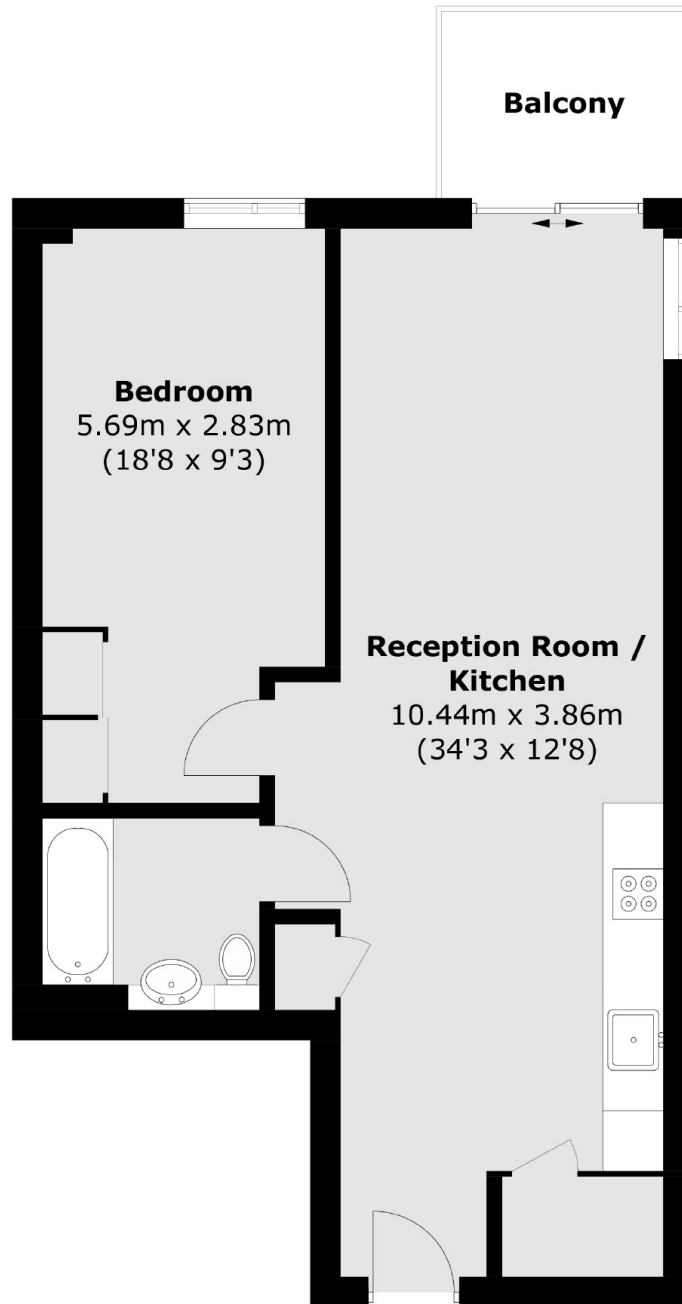
Presenting a one-bedroom, first-floor apartment with 608 sq/ft of well-designed living space and an exclusive private terrace. This recently constructed property is in impeccable condition, featuring an open-plan kitchen/living room that seamlessly connects to the inviting terrace. With ample storage options and minimal service charges, this residence offers both comfort and convenience.

A brief walk from Greenford station on the Central Line provides fast connections to Central London, the City, and Canary Wharf.

### Features

- Newly Constructed
- Large Double Bedroom
- Open Plan Living/Kitchen
- Terrace/Balcony
- 0.6 Mile Central Line
- Impressive Gym

Bakery Walk,  
Greenford, UB6



Total area (approx.): 56.5 sq. m (608.2 sq. ft)  
Balcony: 4.5 sq. m (48.4 sq. ft)