



Boston Manor Road, TW8

£600,000

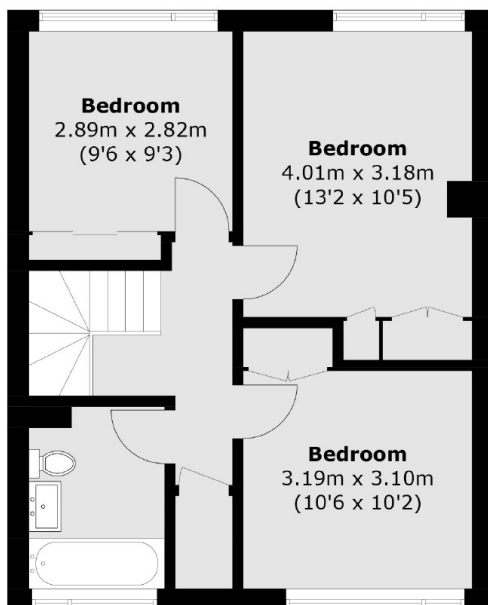
This spacious freehold house boasts three double bedrooms and spans across 1048 square feet of living space. Upon entry, a welcoming porch leads to a large kitchen. The highlight of the ground floor is the expansive dining/living area which seamlessly connects to the garden, offering a perfect blend of indoor and outdoor living. Moving upstairs, a generously sized family bathroom complements the three double bedrooms, providing ample comfort and convenience. Furthermore, the property includes a garage and is offered with no onward chain, making it an enticing prospect for potential buyers.

The property is located under a 10 minute walk from Boston Manor Underground Station and also is within very close reach of the M4 for easy access to central London via car. There is also good bus routes near by and great local amenities a short walk away.

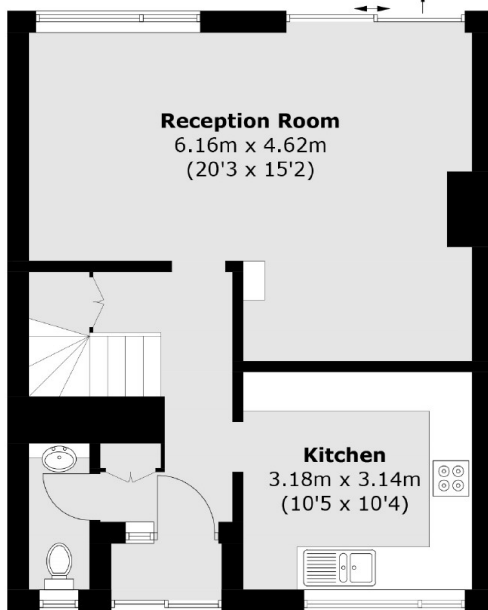
Features

- Three Double Bedrooms
- South Facing Garden
- 1048 Square Feet
- Garage
- Chain Free
- 0.5 mile Piccadilly Line

Boston Manor Road, Brentford, TW8



First Floor To Garden

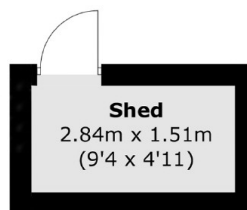


Ground Floor

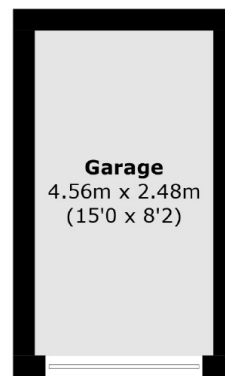
Total area (approx.): 97.4 sq. m (1,048.4 sq. ft)

Shed: 4.4 sq. m (47.4 sq. ft)

Garage: 11.4 sq. m (122.7 sq. ft)



(Not Shown In Actual
Location / Orientation)



(Not Shown In Actual
Location / Orientation)