



Green Lane, W7

£945,000

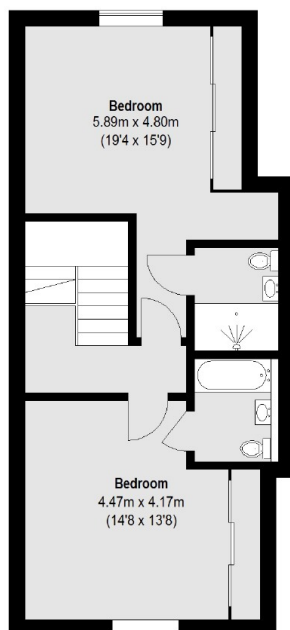
A one of a kind three bedroom end of terrace three storey home constructed just five years ago. Occupying the most prestigious plot in the private gated development, immediately adjacent to, and overlooking the River Brent. There is a garage and residents parking.

Hanwell station with the newly opened Elizabeth Line is less than a mile away, along with Boston Manor (Piccadilly Line) close by.

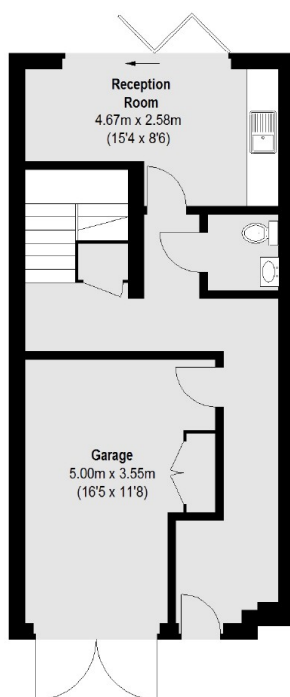
Features

- Three Bedrooms
- Three En-Suite Bathrooms
- End Terrace
- Garage
- Gated Development
- No Onward Chain

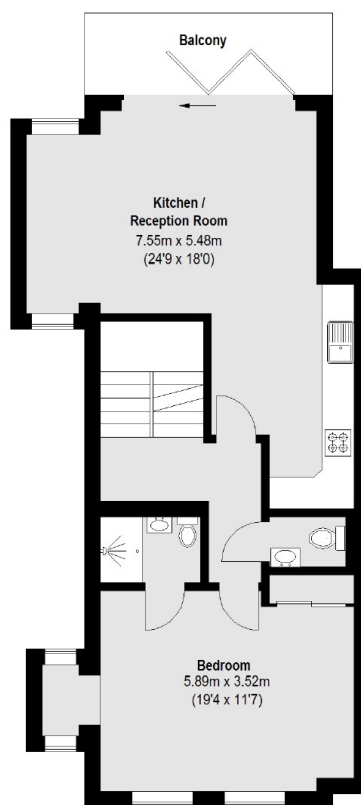
Green Lane, London, W7



Second Floor



Ground Floor



First Floor

Total area (approx.): 168.37 sq. m (1812 Sq. ft)
(Including Garage)
Balcony: 7.28 sq. m (78 Sq. ft)