

Whitestile Road, TW8

£875,000

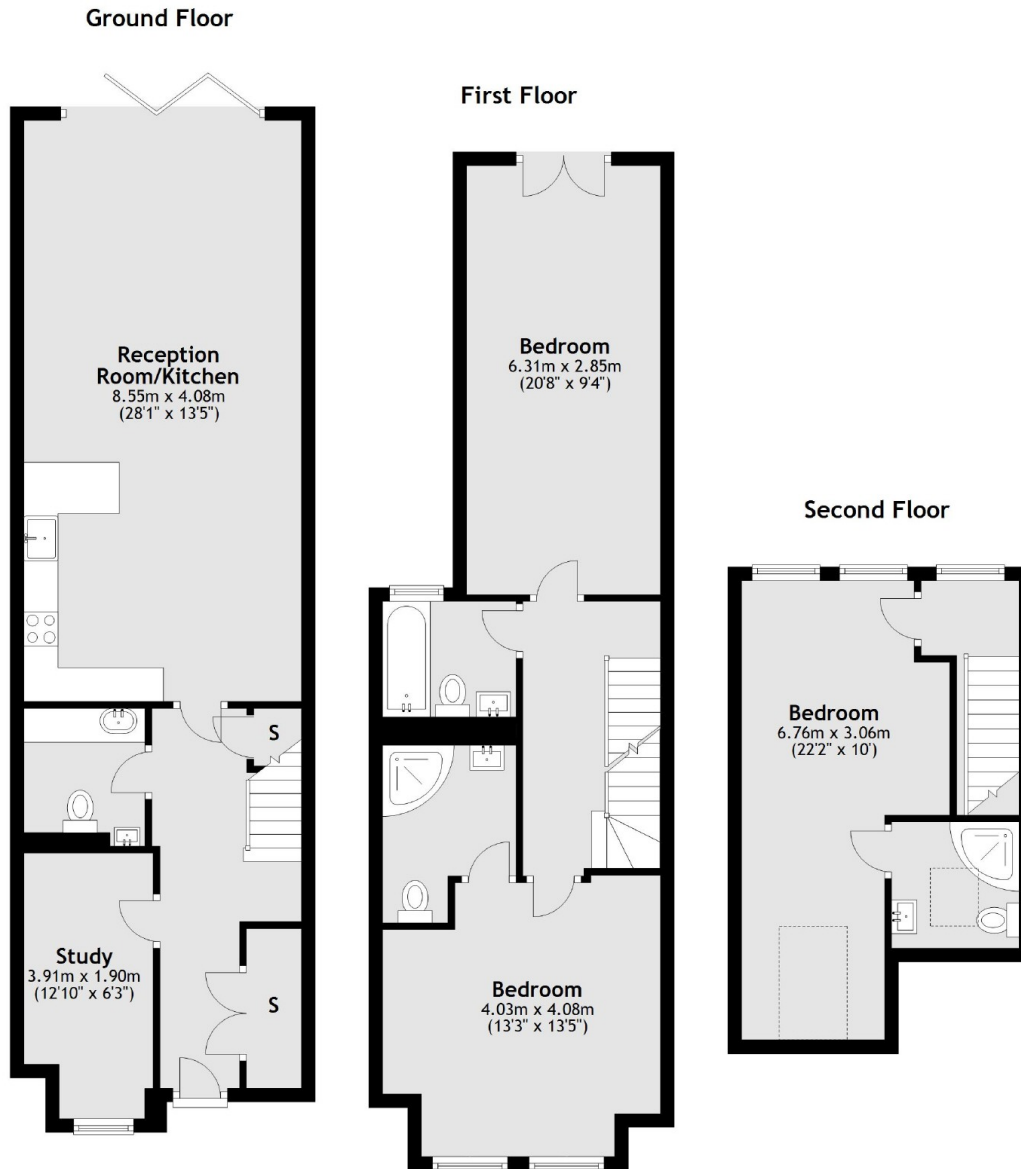
A new-build three bedroom, three bathroom house laid out over three floors, with a contemporary open-plan kitchen, dining and living area and private rear garden.

Located half a mile from South Ealing tube station and just over half a mile from both Northfields underground station and Brentford Mainline Train station.

Features

Over 1,400 sq. ft.
Three Double Bedrooms
Three Bathrooms
Underfloor Heating
High-Spec Finish Throughout
Landscaped Rear Garden

Whitestile Road, Brentford, TW8



Total area: approx. 134.1 sq. metres (1443.3 sq. feet)