



## Sydney Road, W13

£623 Per week

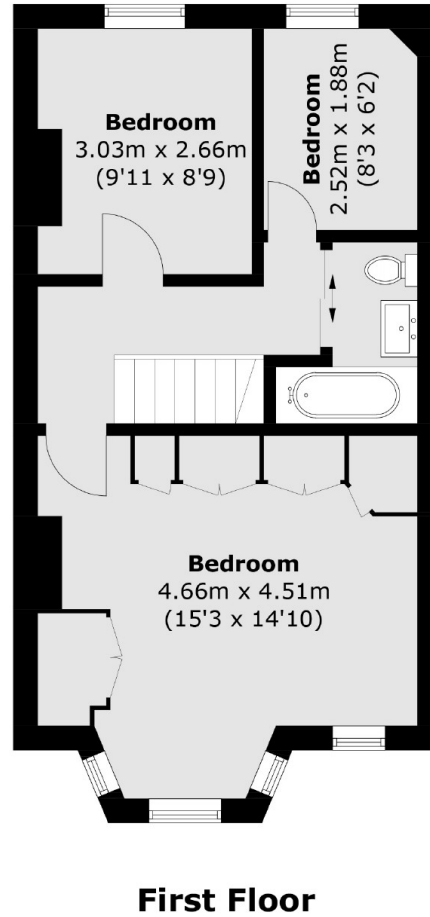
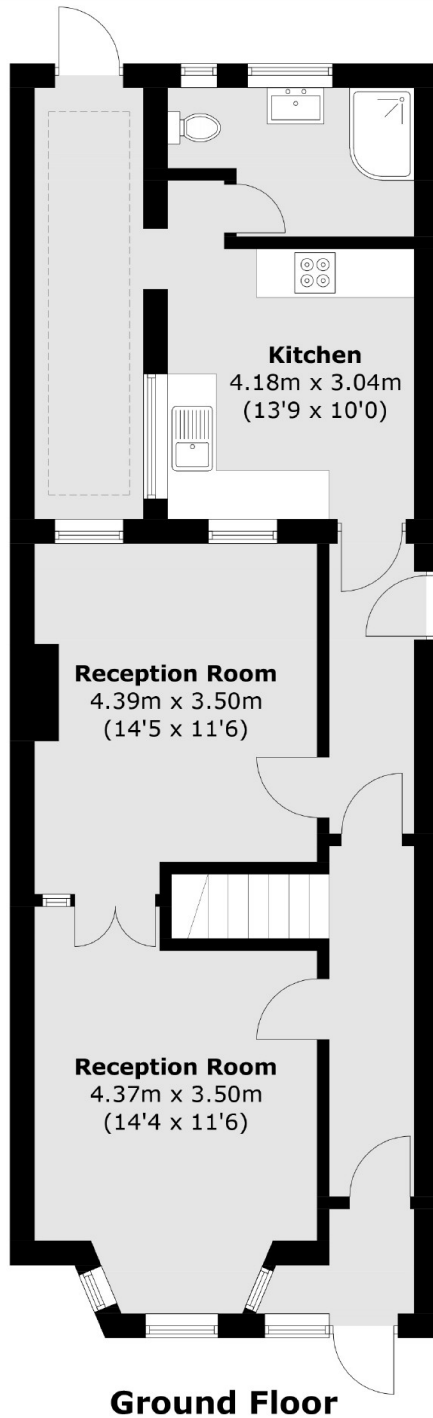
Ideal for a family, this three bedroom house has two large receptions and a separate eat-in kitchen, two modern bathrooms and a private garden to enjoy this summer. Available for six months.

Close to both Oaklands and Fielding Primary School, located in-between Northfields Avenue and Boston Road, this location is ideal for transport and local amenities.

### Features

- Six Month Tenancy
- Three Bedroom House
- Two Bathrooms
- Private Garden
- Gas Central Heating
- Close To Station

Sydney Road,  
London, W13



Total area (approx.): 113.3 sq. m (1,219.5 sq. ft)