



Hilda Road, UB2

£429,950

This newly converted two-bedroom flat is positioned on the first floor of a private complex. As you enter, you are welcomed by a spacious entrance hall leading to two generously sized double bedrooms, one with en-suit, a separate family bathroom, and a luminous open plan kitchen / living room.

Located less than a mile from Hanwell station (Elizabeth Line). Access to the Grand Union Canal and large meadows and parks. With access to Ealing and Heathrow Airport.

Features

- Grade II Listed
- Two Double Bedrooms
- Two Bathrooms
- Private Parking
- Newly Refurbished
- Elizabeth Line (0.9 mile)

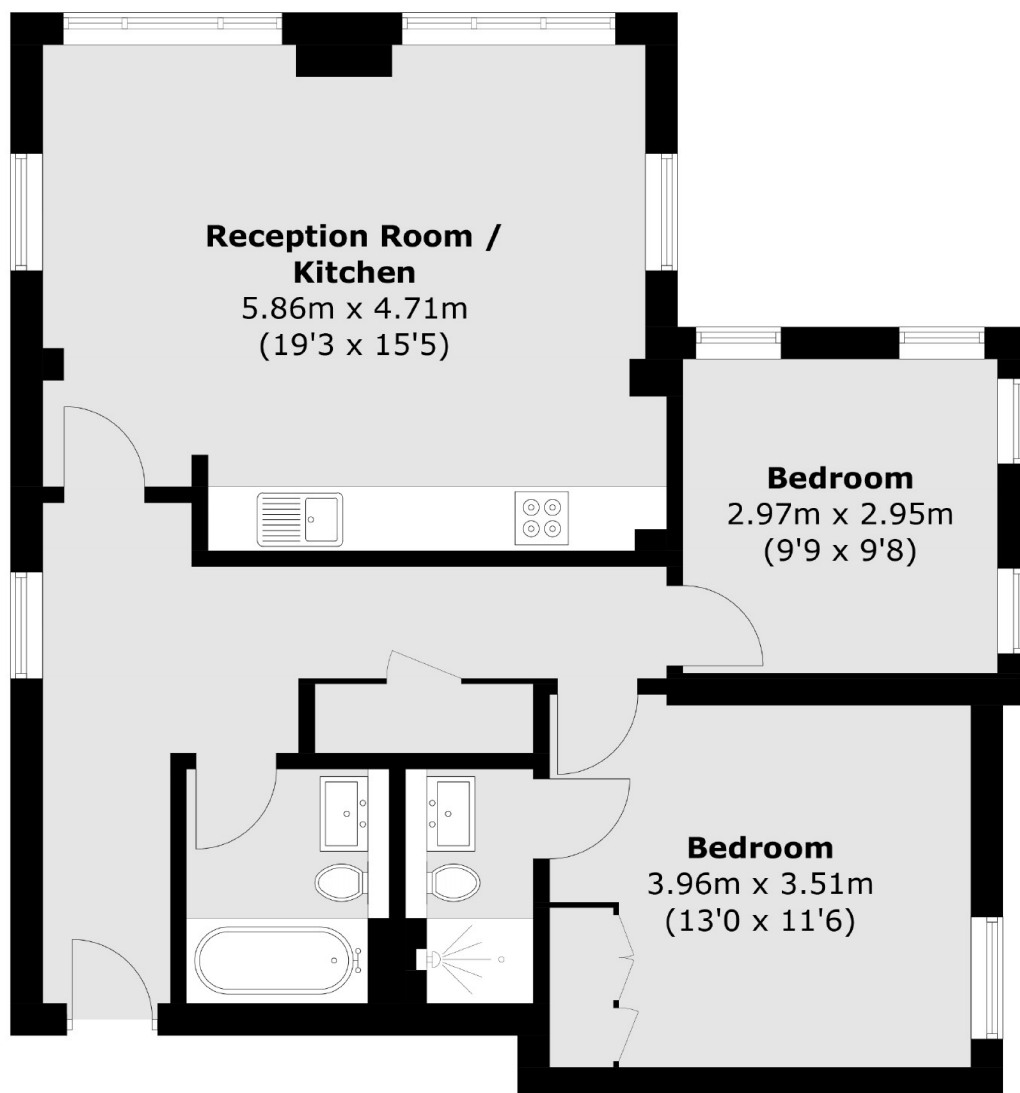


Hilda Road, UB2

The property has undergone extensive renovations, seamlessly blending modern living spaces with its historical charm as a Grade II listed conversion. Beyond its interior allure, the property boasts private parking and communal gardens.



Hilda Road, Southall, UB2



Total area (approx.): 72.5 sq. m (780.4 sq. ft)