



Hilda Road, UB2

£390,000

This two bedroom newly converted flat is situated on the first floor or a private complex. The property comprises of a large entrance hall, two double bedrooms, family bathroom, and a bright an airy open plan kitchen/living room.

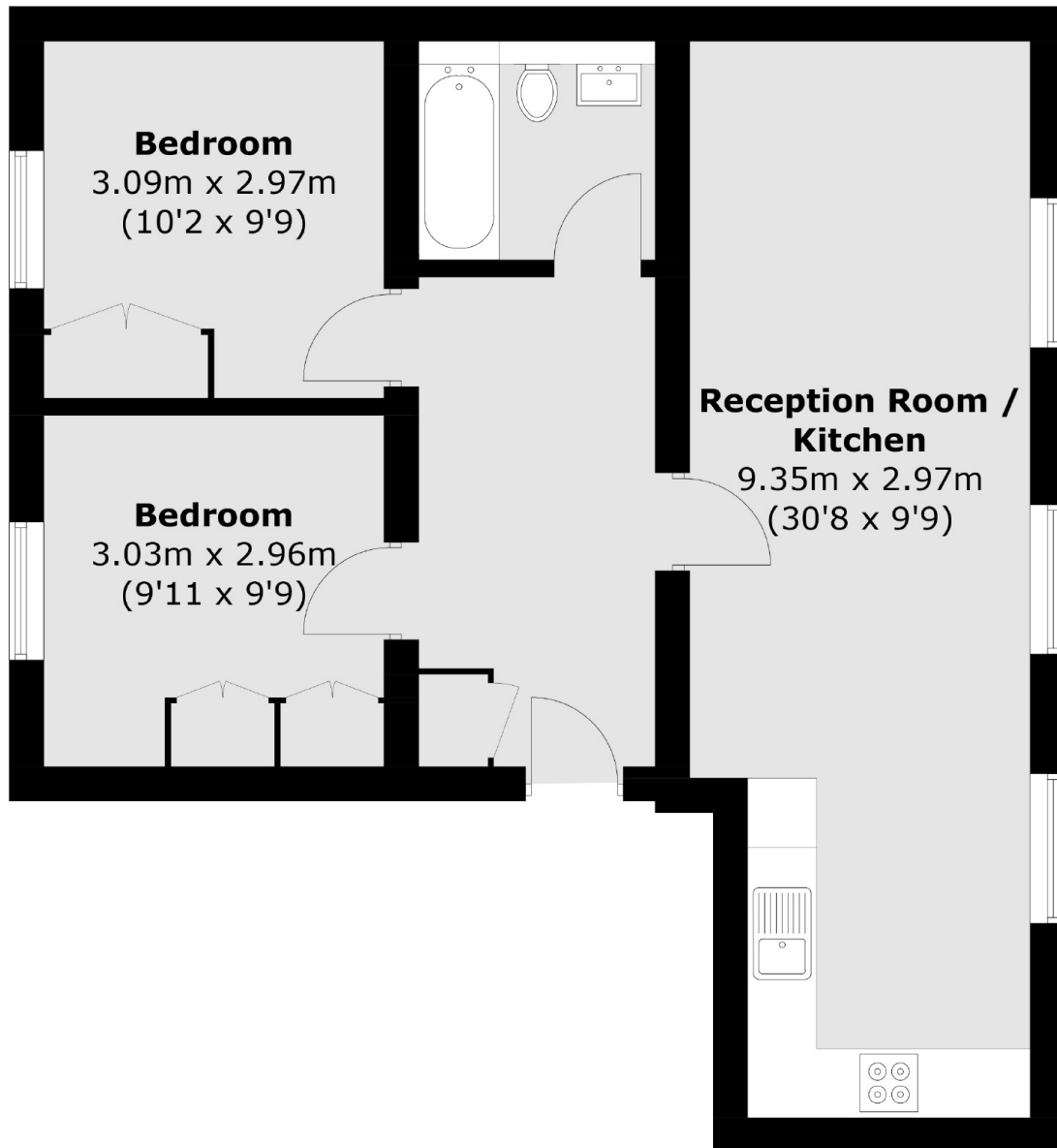
This property has been extensively renovated and offers modern living spaces while retaining its historical charm as a Grade II listed conversion. The private parking and communal gardens are added amenities that can enhance the overall appeal of the property.

Located less than a mile from Hanwell station (Elizabeth Line). Access to the Grand Union Canal and large meadows and parks. With access to Ealing and Heathrow Airport.

Features

- Grade II Listed
- Two Double Bedrooms
- Gated Development
- South Facing Aspect
- Newly Refurbished
- Elizabeth Line (0.9 mile)

Hilda Road,
Southall, UB2



Total area (approx.): 61.5 sq. m (662.0 sq. ft)

Dexters

Northfields
124 Northfield Avenue
London
W13 9RT
Sales
020 8545 8588

Energy Rating: TBC. We aim to make our particulars both accurate and reliable. However they are not guaranteed; nor do they form part of an offer or contract. If you require clarification on any points then please contact us, especially if you're traveling some distance to view. Please note that appliances and heating systems have not been tested and therefore no warranties can be given as to their good working order.

 **RICS** | Regulated
Estate Agent
and Letting Agent

dexters.co.uk