

Monmouth Grove, TW8

£300,000

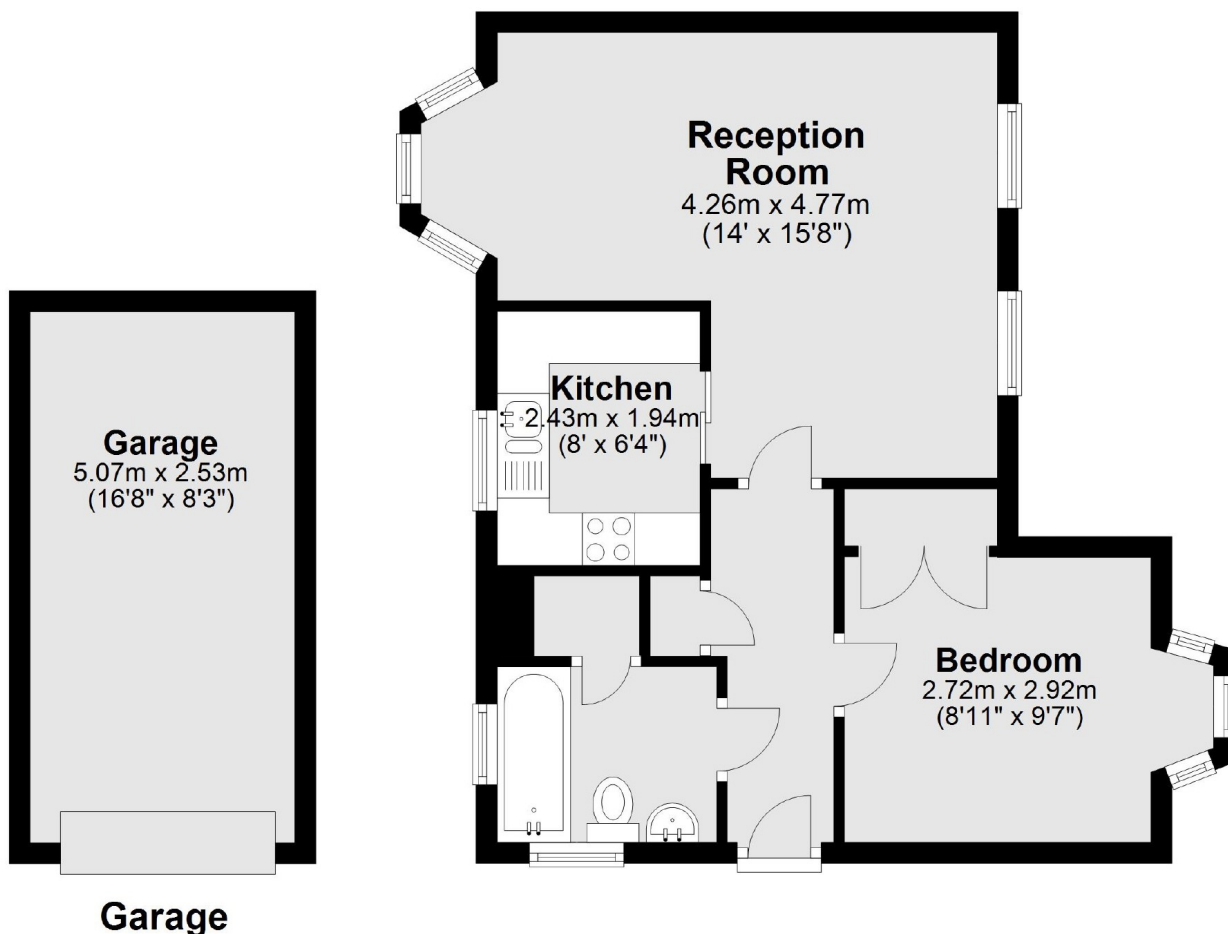
A modern second floor one bedroom purpose-built flat, located in this sought after development in a great location. With a long lease, garage and allocated parking.

Monmouth Grove is close to Gunnersbury Park, with the nearest stations being South Ealing (Piccadilly Line), Kew Bridge and Brentford (both National Rail).

Features

- Large Living Area
- Low Service Charges
- One Double Bedroom
- Separate Kitchen
- Garage And Parking
- Top Floor (2nd)

Monmouth Grove, Brentford, TW8



Main area: Approx. 42.4 sq. metres (456.5 sq. feet)
Plus garages, approx. 12.8 sq. metres (137.9 sq. feet)