



Stratford Street,

Guide Price £750,000, 4 Bedroom House



A four-bedroom terraced Victorian home located within the popular Iffley Fields area of East Oxford.

- Four double bedrooms
- Located within the desirable Iffley Fields
- Needs Refurbishment
- Period Property
- Ground floor WC
- No forward chain

Freehold

Lease: Not applicable

EPC rating: C

Service Charge: Not applicable

Ground Rent: Not applicable

Contact: 01865 302314
Website Ref: P142329

FindersKeepers™ 



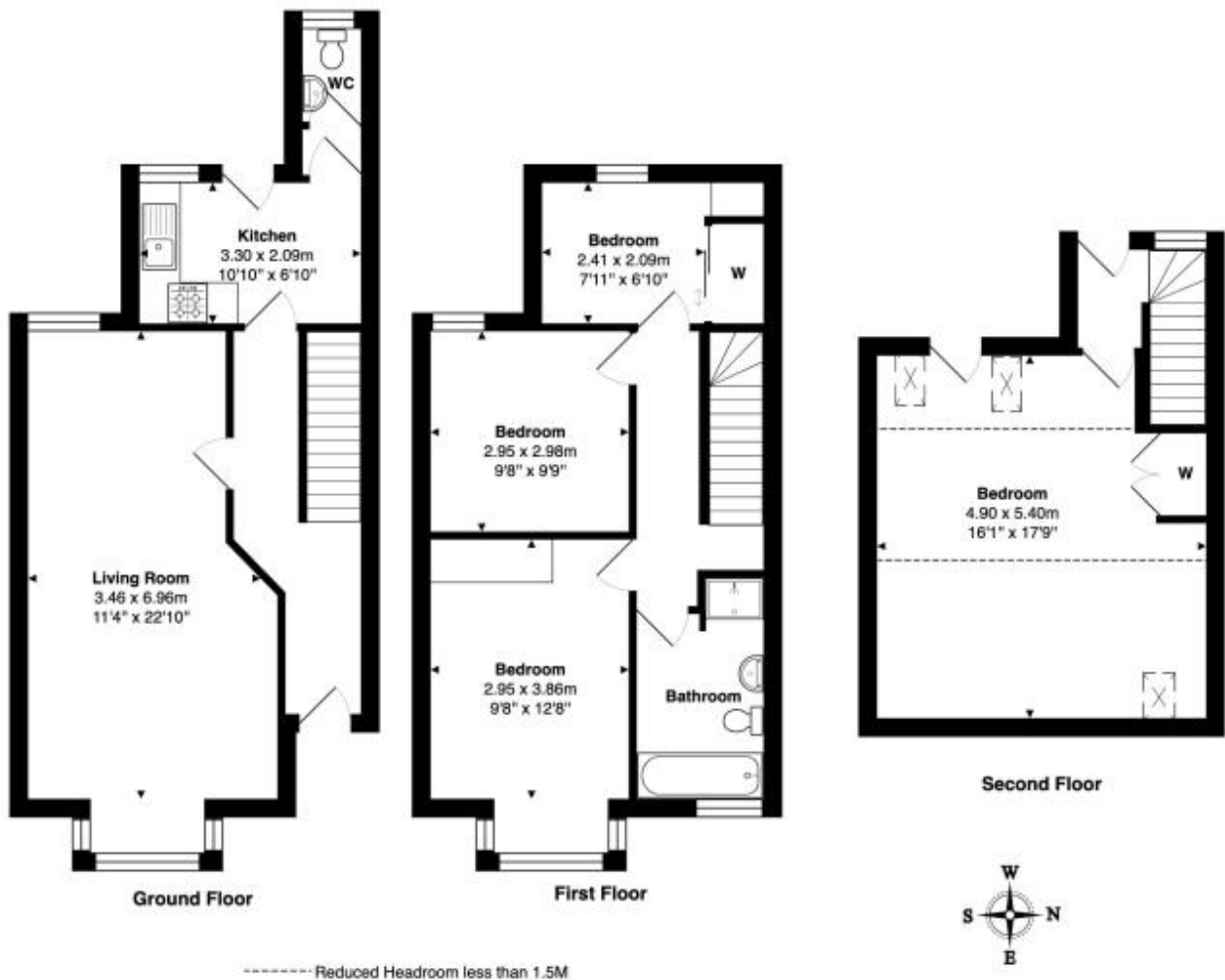
Parking: On-street (free)
 Council tax: Oxford District (B),
 Band E

Locality: Town/City

Motorway: M40 - J8

Train: Oxford

See what's in the area:
finders.co.uk/guides



Approx Gross Internal Area 116.2 m² ... 1250 ft²

Whilst every attempt has been made to ensure the accuracy of the floor plan contained here, measurements of doors, windows, rooms, and any other items are approximate. No responsibility is taken for any error, omission, or mis-statement. This plan is for illustrative purposes only and should be used as such. Drawn by E8 Property Services. www.e8ps.co.uk