



## Merrivale Square, Waterside

**£595,000 2 Bedroom Flat**



A large and beautiful apartment on Merrivale Square which has been recently renovated and is sold with no onward chain.

- 1 double bedroom, 1 study/guest room
- Bathroom & en suite shower room
- Living/dining room
- Kitchen with integrated appliances
- Off-street parking
- Sold with no onward chain

**Leasehold**

**Lease: 105 years**

**Service Charge: £2050**

**Ground Rent: £0**

**Contact: 01865 302314**

**Website Ref: P144857**

**Inspired**   
Sales & Acquisitions  
FindersKeepers™



EPC rating: C

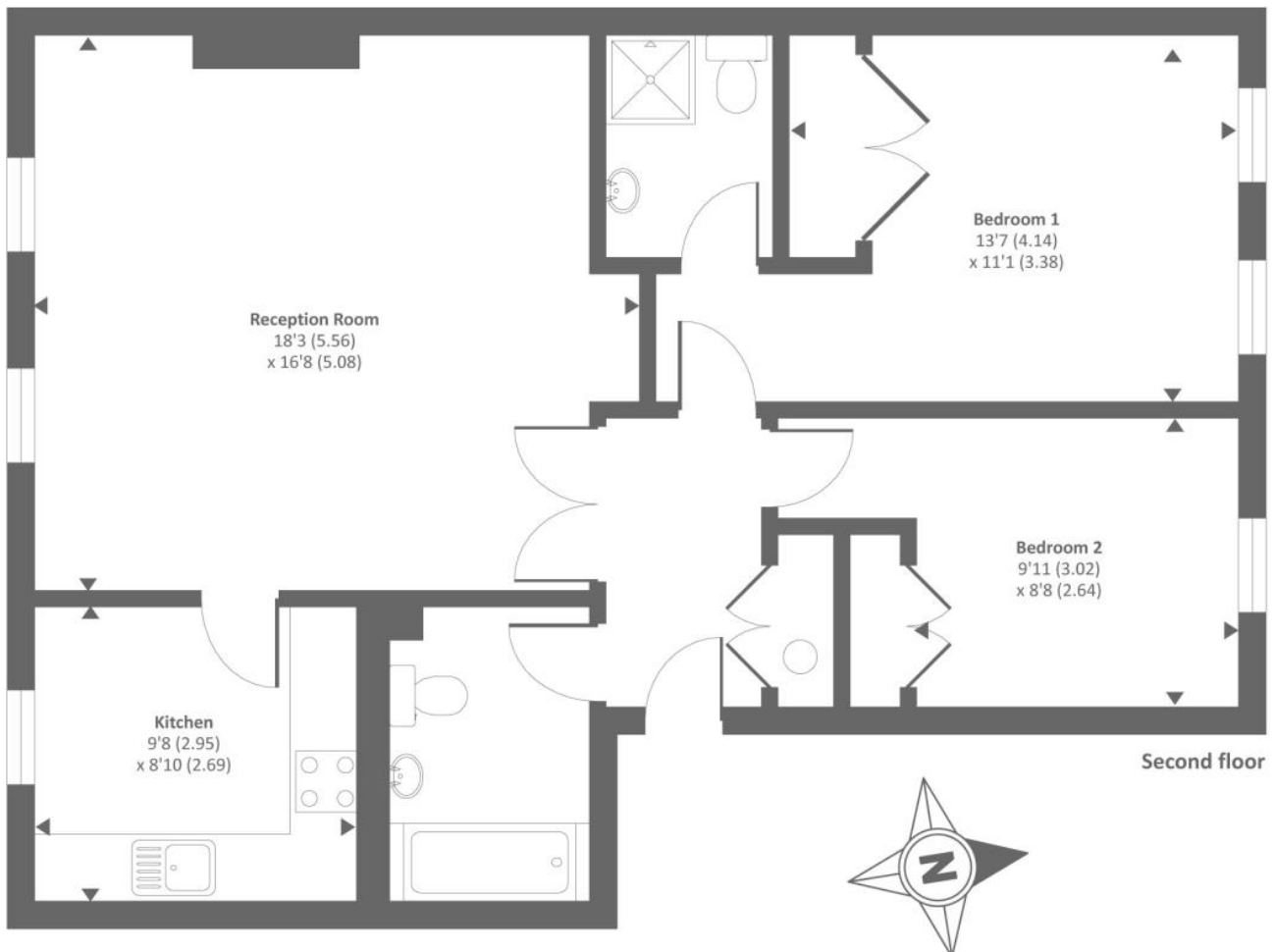
Parking: Off-street

Council tax: Oxford District (B),  
Band E

Locality: Town/City

Motorway: M40 - J8

Train: Oxford



Approx. gross internal floor area 826 SQFT / 76.7 SQM  
Copyright nichecom.co.uk 2011 Produced for Chancellors REF : 202020