



Rickyard Close, City Centre

£540,000 2 Bedroom Flat



An impressive modern two bed duplex apartment with lovely river views and private parking in central Oxford.

The property which is furnished to a high standard throughout includes an open-plan kitchen/sitting room with adjoining cloak room & doors leading on to a private patio area. To the first floor are two double bedrooms both with en suite bathrooms.

- 2 bedrooms each with an en-suite bathroom
- Open-plan kitchen with appliances
- Sitting room & Cloakroom
- Living room with doors to private patio
- 1 allocated off street parking space
- Walking distance to train station nearby shops

Contact: 01865 302314

Website Ref: P142280

Leasehold

Lease: 971 years

Service Charge: £1560.9

Ground Rent: £200

Inspired 
Sales & Acquisitions
FindersKeepers™



EPC rating: C

Parking: Off-street

Council tax: Oxford District (B),
Band E

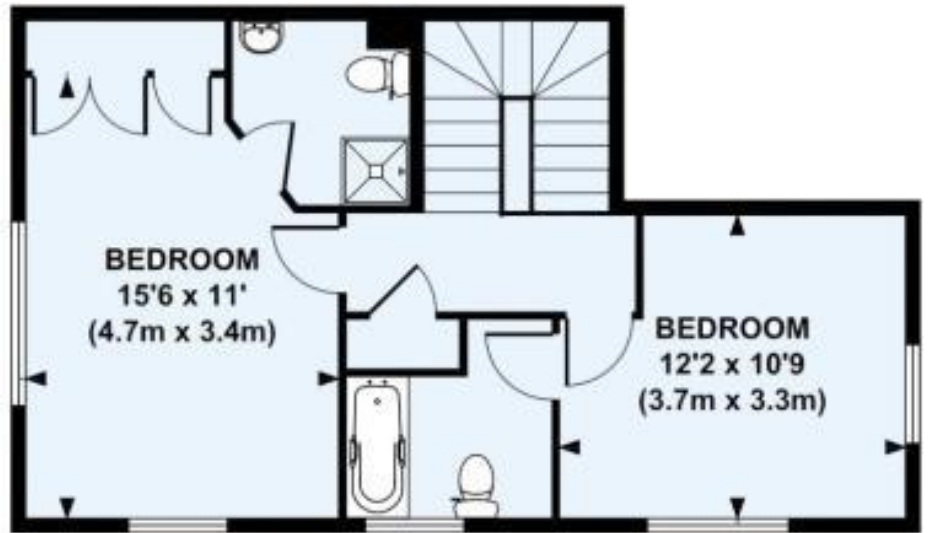
Locality: Town/City

Motorway: M40 - J8

Train: Oxford

Main House 951 Sq Feet (89 Sq Meters)

Total Area 951 Sq Feet (89 Sq Meters)



FIRST FLOOR



GROUND FLOOR