



Banbury Road, Oxford

£395,000 1 Bedroom Flat



A beautifully presented one double bedroom first floor apartment located within a sought after development in central Summertown. There is a secure entry system to the building and lift access.

- Double bedroom
- Shower room
- Living/dining room
- Kitchen
- No parking available

Leasehold

Lease: 116 years

Service Charge: £1786.55

Ground Rent: £200

Contact: 01865 302314

Website Ref: P142266

Inspired 
Sales & Acquisitions
FindersKeepers™



EPC rating: C

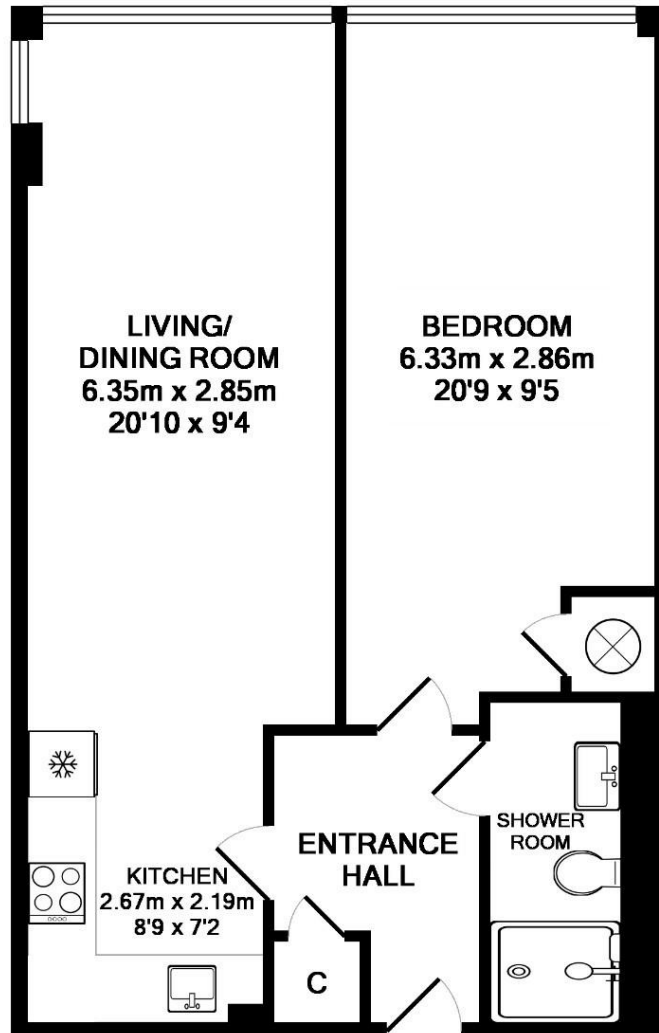
Parking: No parking

Council tax: Oxford District (B),
Band B

Locality: Town/City

Motorway: M40 - J9

Train: Oxford Parkway



TOTAL APPROX. FLOOR AREA 52.7 SQ.M. (568 SQ.FT.)

Whilst every attempt has been made to ensure the accuracy of the floor plan contained here, measurements of doors, windows, rooms and any other items are approximate and no responsibility is taken for any error, omission, or mis statement. This plan is for illustrative purposes only and should be used as such by any prospective purchaser. Drawn by E8 Property Services. - www.e8ps.co.uk
Made with Metropix ©2016