



Stratfield Road, Summertown

£1,200,000 4 Bedroom House



A fantastic family home on a much sought after side road in central Summertown.

- 4 double bedrooms
- 2 family bathrooms, shower room & cloak room
- 2 reception rooms
- Large kitchen
- West facing garden & permit parking
- Excellent location for Summertown & schools

Freehold

Lease: N/A

Service Charge: N/A

Ground Rent: N/A

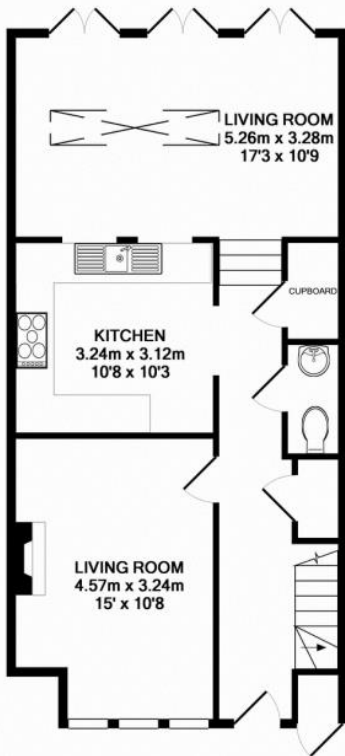
Contact: 01865 302314

Website Ref: P141931

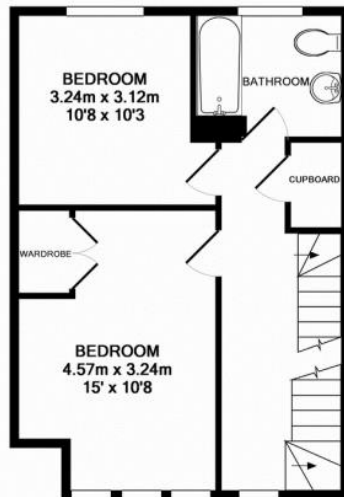
Inspired 
Sales & Acquisitions
FindersKeepers™



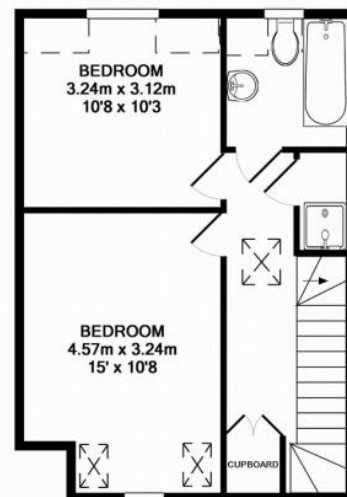
EPC rating: C
 Parking: On-street (permit)
 Council tax: Oxford District (B), Band F
 Locality: Town/City
 Motorway: M40 - J8
 Train: Oxford



GROUND FLOOR
 APPROX. FLOOR
 AREA 57.0 SQ.M.
 (613 SQ.FT.)



1ST FLOOR
 APPROX. FLOOR
 AREA 39.4 SQ.M.
 (424 SQ.FT.)



2ND FLOOR
 APPROX. FLOOR
 AREA 39.7 SQ.M.
 (428 SQ.FT.)

TOTAL APPROX. FLOOR AREA 136.1 SQ.M. (1465 SQ.FT.)

These measurements are the maximum & are approximate only, they do not take into account minimum measurements. Drawn by ES Property Services - www.esps.co.uk
 Made with Metropix ©2014

