



## Bennett Crescent, Temple Cowley

£300,000, 2 Bedroom Flat



A well-presented two bedroom top floor apartment in Temple Cowley with two allocated off-street parking spaces. There are regular bus routes to the city centre and conveniently located for access to Oxford Business Park, BMW Plant & Ring road. Within 2.6 miles of the city centre.

- 2 double bedrooms
- Bathroom & en suite shower room
- Living/dining room with bay window
- Kitchen/breakfast room
- 2 allocated parking spaces
- Within 2.6 miles of the city centre

Leasehold

Lease: 973 Years

EPC rating: C

Service Charge: £1565

Ground Rent: £0

Contact: 01865 302314

Website Ref: P142197

FindersKeepers™



Parking: Off-street  
Council tax: Oxford District (B),  
Band D

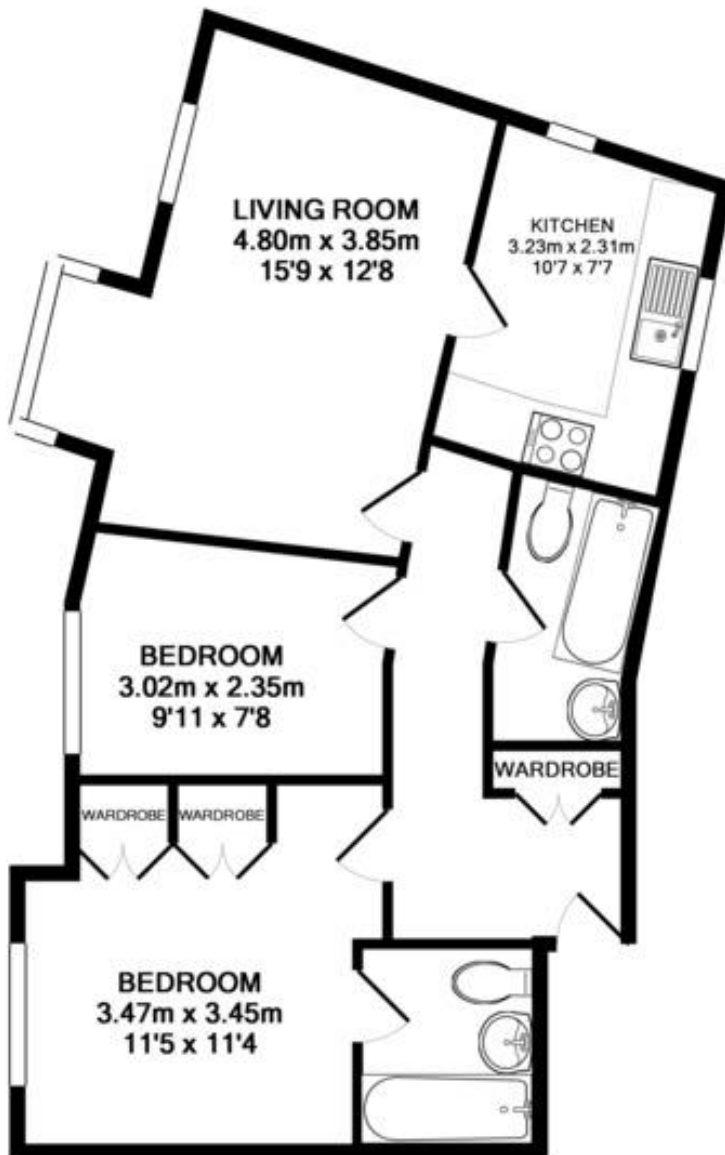
Locality: Town/City

Motorway: M40 - J8

Train: Oxford

See what's in the area:  
[finders.co.uk/guides](http://finders.co.uk/guides)

FindersKeepers™



TOTAL APPROX. FLOOR AREA 52.2 SQ.M. (562 SQ.FT.)

These measurements are the maximum & are approximate only, they do not take into account minimum measurements. Drawn by E8 Energy Solutions - [www.e8es.co.uk](http://www.e8es.co.uk)  
Made with Metropix ©2012