



Nursery Close, Botley

£290,000 2 Bedroom Flat



A modern, 2 bedroom ground floor apartment with easy access to Oxford city centre. The flat is within walking distance to the new West Way shopping precinct, which offers plenty of shops and amenities.

- No Onward Chain
- Open plan living/dining room
- Private patio area
- Allocated parking space
- Good access to Oxford station and transport links
- Ground Floor Apartment

Leasehold

Lease: 116 years

Service Charge: £0

Ground Rent: £0

Contact: 01865 302314

Website Ref: P142070

Inspired 
Sales & Acquisitions
FindersKeepers™



EPC rating: C

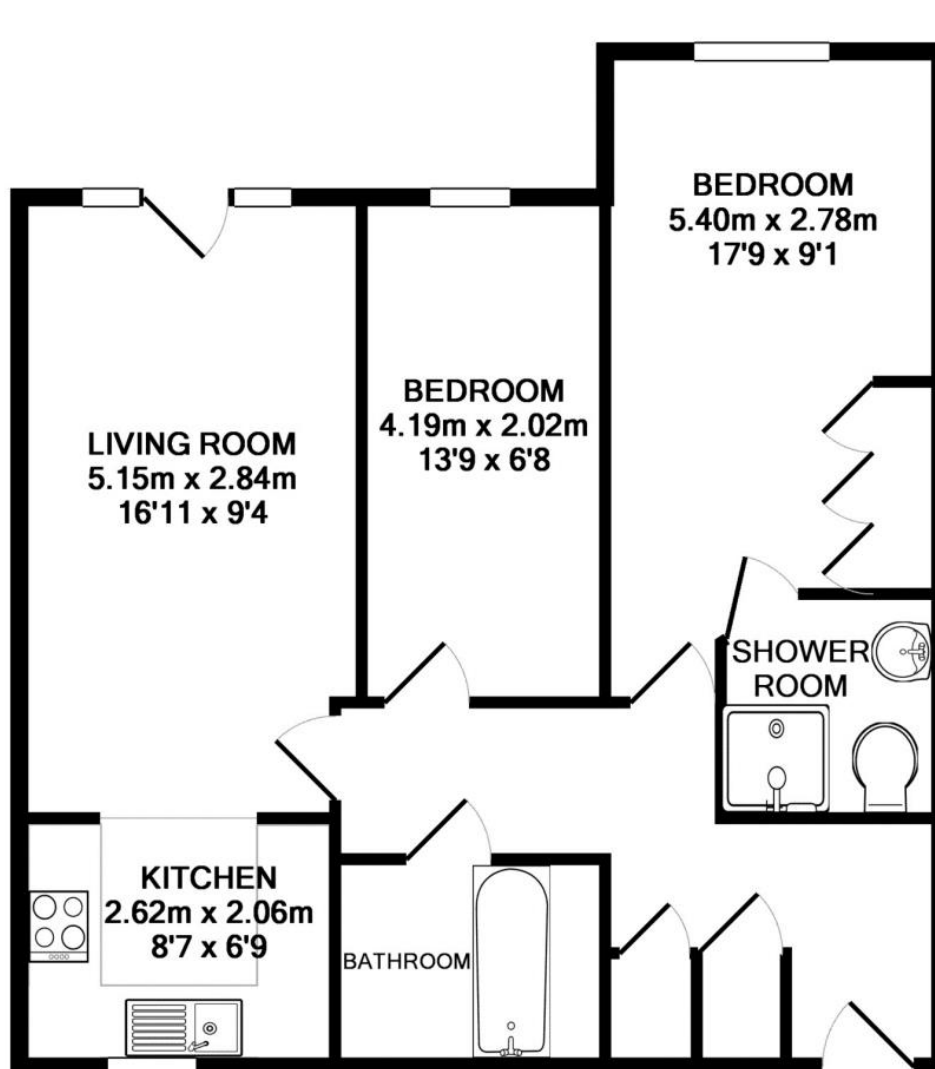
Parking: Off-street

Council tax: VOWH, Band C

Locality: Town/City

Motorway: M40 - J8

Train: Oxford



TOTAL APPROX. FLOOR AREA 58.4 SQ.M. (629 SQ.FT.)

These measurements are the maximum & are approximate only, they do not take into account minimum measurements. Drawn by E8 Energy Solutions - www.e8es.co.uk
Made with Metropix ©2012