



The Beeches, Headington

£350,000 2 Bedroom House



A modern mid terraced house in a quiet no through road with convenient access to the ring road, Headington Hospitals, amenities & London coach stop. The property has a living / dining room with doors to the rear garden, modern kitchen with gas hob, wood flooring throughout, 2 double bedrooms, bathroom with shower & tile flooring, garden with shed & rear access & 2 private parking spaces.

- 2 double bedrooms
- Living room with patio doors to the rear garden
- Kitchen with fridge freezer
- Rear garden with shed & rear access
- 2 private parking spaces
- Within walking distance of local amenities

Contact: 01865 302314

Website Ref: P142120

Freehold

Lease: N/A

Service Charge: N/A

Ground Rent: N/A

Inspired 
Sales & Acquisitions
FindersKeepers™



EPC rating: E

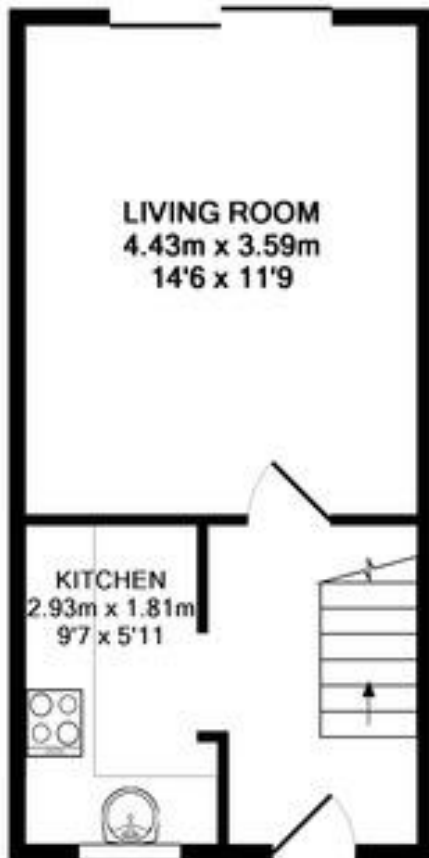
Parking: Off-street

Council tax: Oxford District (B),
Band C

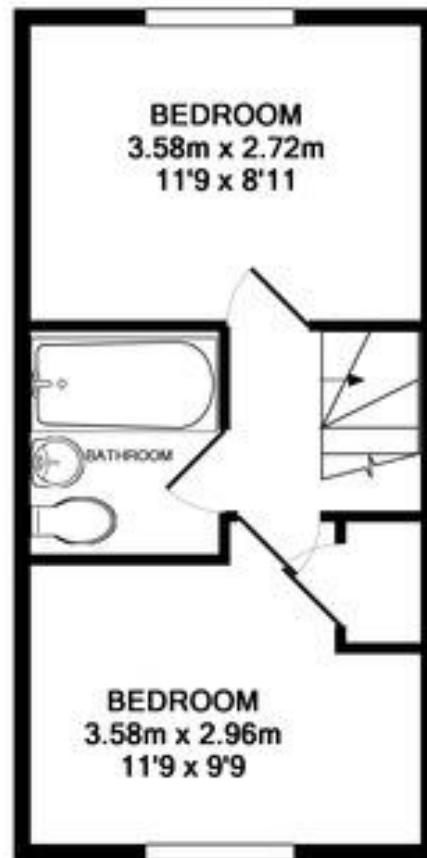
Locality: Town/City

Motorway: M40 - J8

Train: Oxford



GROUND FLOOR



1ST FLOOR



TOTAL APPROX. FLOOR AREA 52.8 SQ.M. (568 SQ.FT.)

These measurements are the maximum & are approximate only, they do not take into account minimum measurements. Drawn by E8 Energy Solutions - www.e8es.co.uk
Made with Metropix ©2012