



Lechlade Road Faringdon SN7

£270,000 2 Bedroom House



A beautifully restored terraced two bedroom stone cottage set in the heart of this historic market town.

- Two bedrooms
- Modernised throughout
- Modern fitted kitchen
- Open plan living
- Front and rear garden
- Close to all local amenities

Freehold

Lease: N/A

Service Charge: N/A

Ground Rent: N/A

Contact: 01865 302314

Website Ref: P141934

Inspired 
Sales & Acquisitions
FindersKeepers™



EPC rating: C

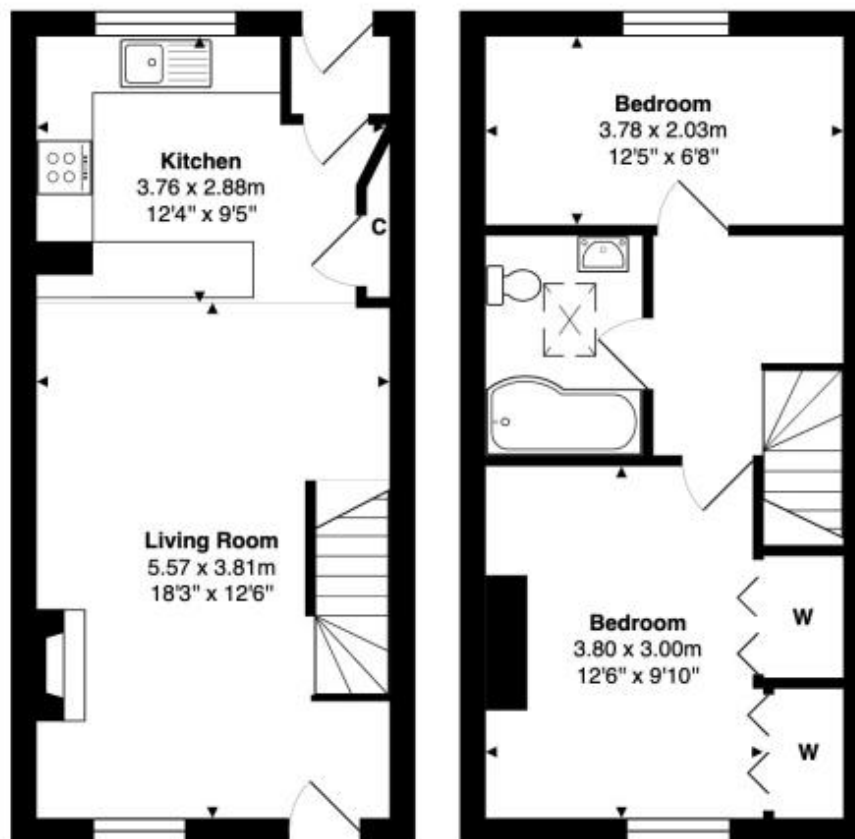
Parking: On-street (permit)

Council tax: VOWH, Band B

Locality:

Motorway: M40 - J8

Train:



Ground Floor

First Floor

Approximate Gross Internal Area

64.8 m² ... 698 ft²

Whilst every attempt has been made to ensure the accuracy of the floor plan contained here, measurements of doors, windows, rooms, and any other items are approximate. No responsibility is taken for any error, omission, or mis-statement.

This plan is for illustrative purpose only and should be used as such.

Drawn by E8 Property Services. www.e8ps.co.uk

