



## Churchill Road, Kidlington

£575,000 3 Bedroom House



A substantial three bedroom detached family home in Kidlington. The property is located in a great location for access to Oxford City centre, Parkway Railway station, and the shops & amenities of Kidlington High Street.

- Three double bedrooms
- Modern kitchen with appliances
- En suite to principle bedroom
- Driveway parking
- Great location for Oxford city centre & Oxford Parkway station

**Freehold**

**Lease: N/A**

**Service Charge: N/A**

**Ground Rent: N/A**

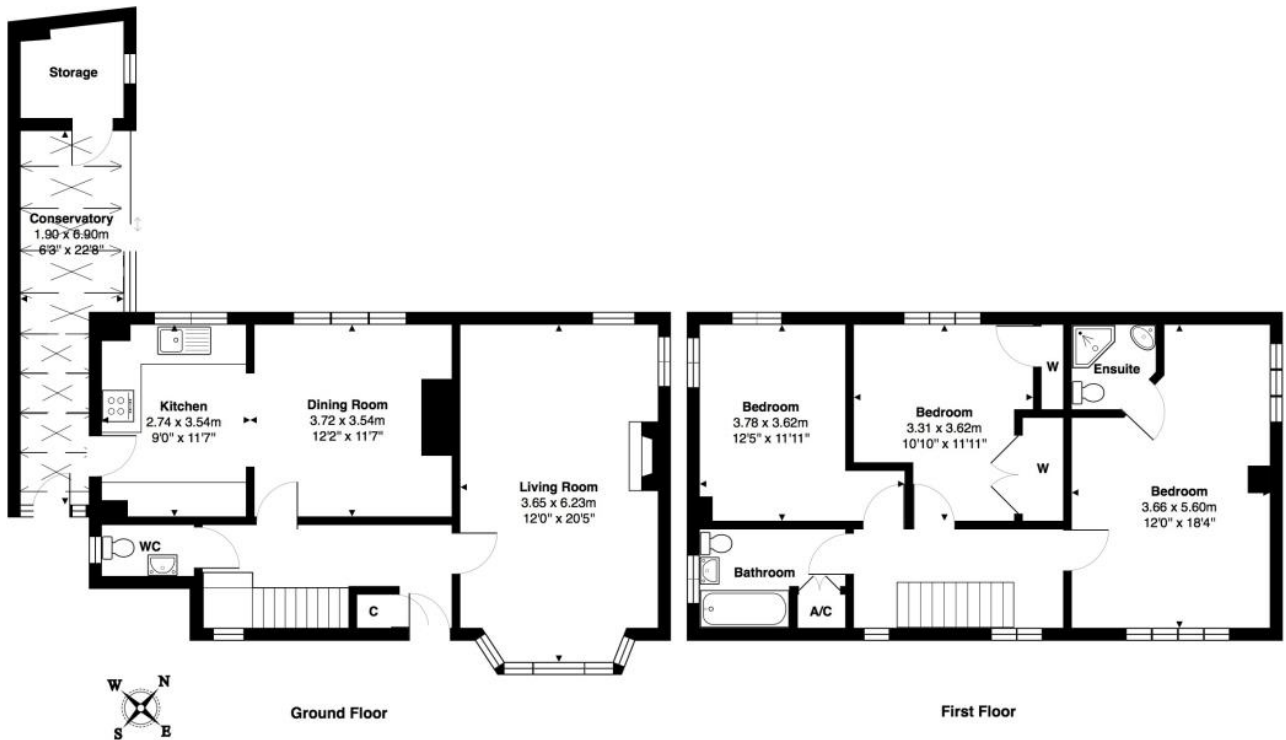
**Contact: 01865 302314**

Website Ref: P141192

**Inspired**   
Sales & Acquisitions  
FindersKeepers™



EPC rating: D  
 Parking: Garage  
 Council tax: Cherwell District, Band D  
 Locality: Town/City  
 Motorway: M40 - J8  
 Train: Oxford Parkway



Approximate Gross Internal Area: 130.5 m<sup>2</sup> ... 1404 ft<sup>2</sup>

Whilst every attempt has been made to ensure the accuracy of the floor plan contained here, measurements of doors, windows, rooms, and any other items are approximate. No responsibility is taken for any error, omission, or mis-statement. This plan is for illustrative purpose only and should be used as such. Drawn by EB Property Services. [www.ebps.co.uk](http://www.ebps.co.uk)