



Rewley Park, Oxford

£800,000 4 Bedroom House



A 4 bedroom semi-detached home in a highly desirable location in central Oxford and overlooking Castle Mill Stream to the rear.

- Four bedrooms
- Large living room
- Three bathrooms
- Easy maintenance garden
- Popular location
- No forward chain

Freehold

Lease: N/A

Service Charge: N/A

Ground Rent: N/A

Contact: 01865 302314

Website Ref: P140601

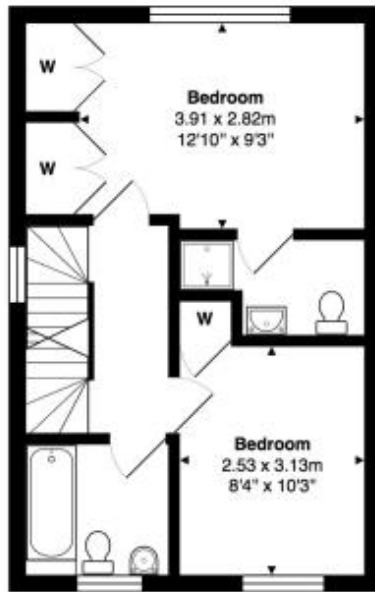
Inspired 
Sales & Acquisitions
FindersKeepers™



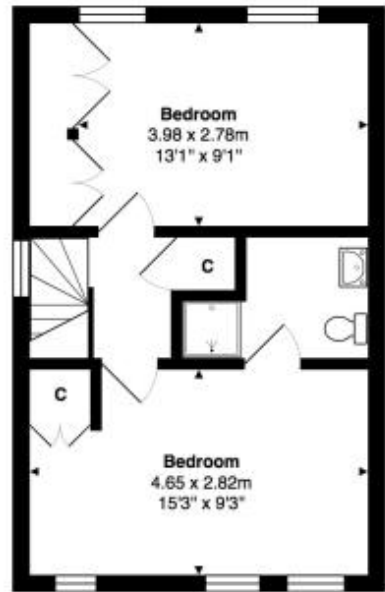
EPC rating: D
 Parking: No parking
 Council tax: Oxford District (B), Band G
 Locality:
 Motorway: M40 - J5
 Train:



Ground Floor



1st Floor



2nd Floor

Approximate Gross Internal Area

107.7 m² ... 1159 ft²

Whilst every attempt has been made to ensure the accuracy of the floor plan contained here, measurements of doors, windows, rooms, and any other items are approximate. No responsibility is taken for any error, omission, or mis-statement. This plan is for illustrative purposes only and should be used as such.
 Drawn by E8 Property Services. www.e8ps.co.uk

