



Wytham, Oxford

£375,000 1 Bedroom Flat



A beautiful Grade II listed one bedroom first floor period apartment in a converted stable block within the picturesque Wytham Abbey.

- 1 double bedroom
- Bathroom with tap & shower mixer
- Living room open to kitchen
- Kitchen with appliances
- Allocated off-road parking space
- Picturesque village location

Leasehold

Lease: 984 years

Service Charge: £1600

Ground Rent: £0

Contact: 01865 302314

Website Ref: P140671

Inspired 
Sales & Acquisitions
FindersKeepers™



EPC rating: D

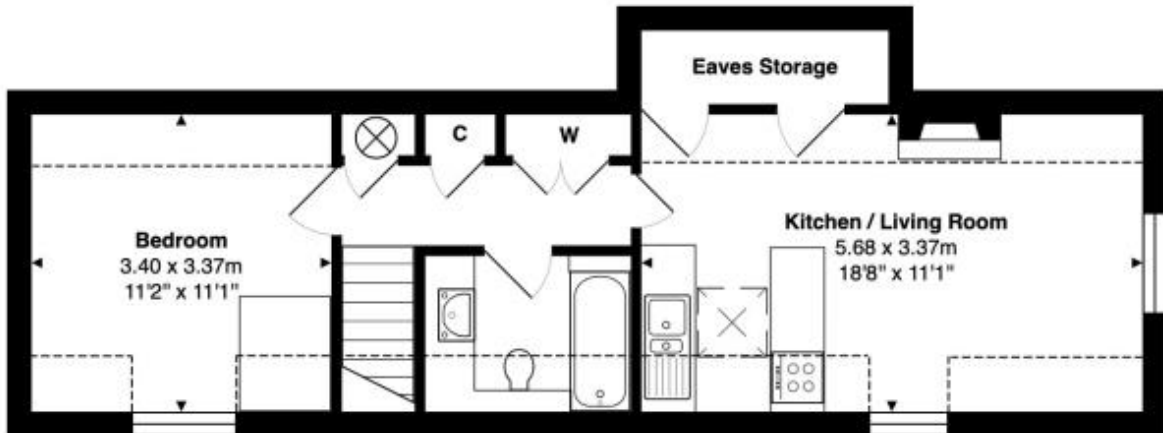
Parking: Off-street

Council tax: VOWH, Band E

Locality: Village

Motorway: M40 - J9

Train: Oxford



First Floor

Approximate Gross Internal Area

45.1 m² ... 486 ft²

Whilst every attempt has been made to ensure the accuracy of the floor plan contained here, measurements of doors, windows, rooms, and any other items are approximate. No responsibility is taken for any error, omission, or mis-statement.

This plan is for illustrative purpose only and should be used as such.

Drawn by E8 Property Services. www.e8ps.co.uk

