



## Medhurst Way, Littlemore

£240,000, 1 Bedroom Flat



This is a modern light & airy second floor apartment with living/dining room, stylish kitchen / breakfast room, double bedroom with good size fitted wardrobe, bathroom with shower & private parking space. This smart apartment is close to the ring road & has convenient access to The Oxford Business / Science Parks, BMW Mini plant & local Superstore.

- One double bedroom
- Fitted kitchen
- Allocated parking space
- 107 year lease
- Close to local amenities
- No forward chain

Leasehold

Lease: Years

EPC rating: C

Service Charge: £1200

Ground Rent: £200

**Contact: 01865 302314**

Website Ref: P140558

**FindersKeepers™**

Parking: Off-street

Council tax: Oxford District (B),  
Band B

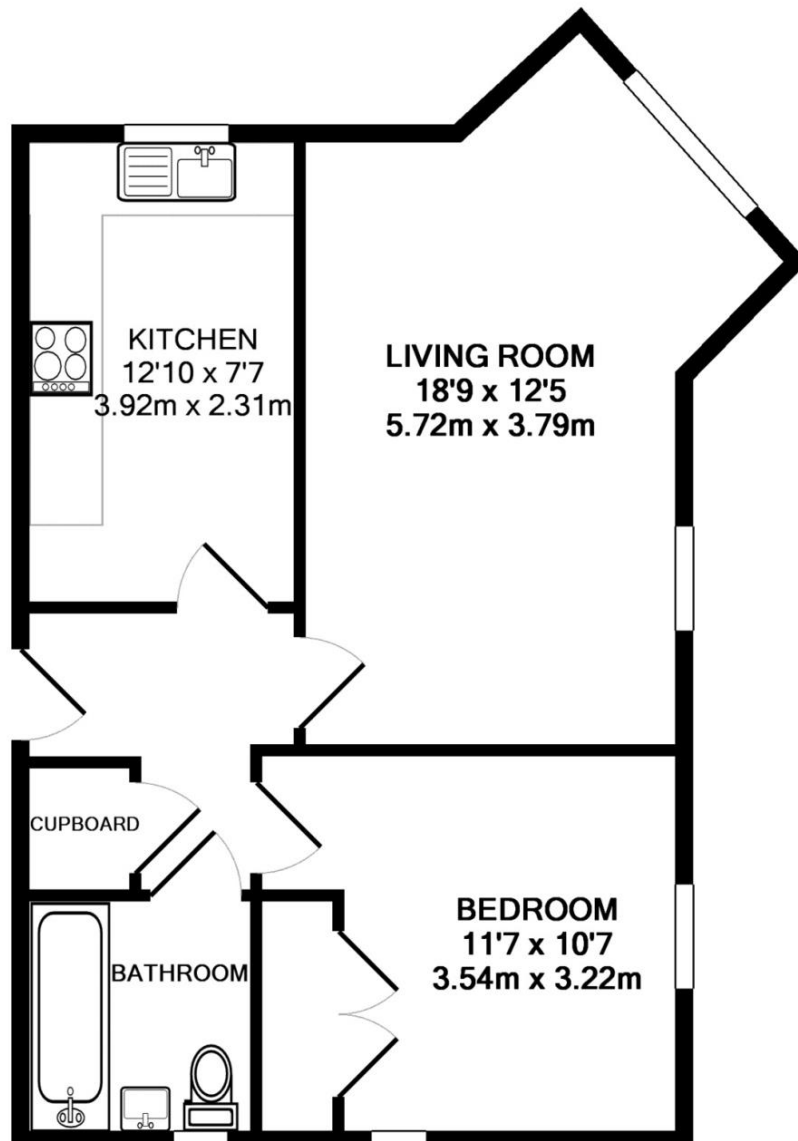
Locality: Town/City

Motorway: M40 - J8

Train: Oxford

See what's in the area:  
[finders.co.uk/guides](http://finders.co.uk/guides)

FindersKeepers™ 



These measurements are the maximum & are approximate only, they do not take into account minimum measurements. Drawn by E8Surveys.com  
Made with Metropix ©2009