



Lime Walk, Headington

£615,000, 5 Bedroom HMO



Investment opportunity. A spacious 5 double bedroom HMO. Upgraded open plan kitchen and living area with space to dine. 2 shower rooms and 2 separate WCs.

- 5 double bedrooms
- Open plan kitchen and living area
- 2 shower rooms and 2 separate WCs
- Spacious low maintenance garden
- Achieving £2925 pcm

Freehold

Lease: Not applicable

EPC rating: C

Service Charge: Not applicable

Ground Rent: Not applicable

Contact: 01865 302314

Website Ref: P140032

FindersKeepers™ 



Parking: On-street (permit)
Council tax: Oxford District (B), Band D

Locality: Town/City

Motorway: M40 - J8

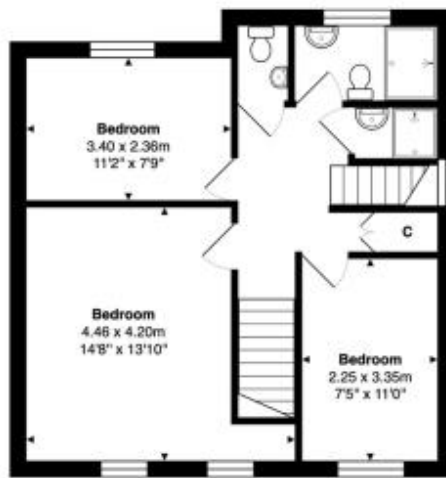
Train: Oxford Parkway

See what's in the area:
finders.co.uk/guides

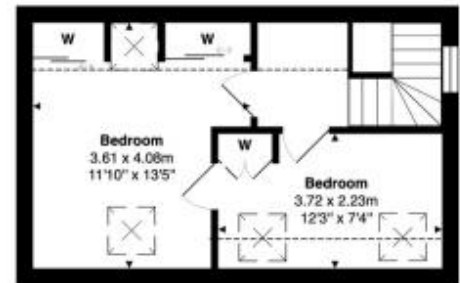
FindersKeepers™ 



Ground Floor



First Floor



Second Floor

Approx. Gross Internal Area: 106.5 m² ... 1147 ft²

Whilst every attempt has been made to ensure the accuracy of the floor plan contained here, measurements of doors, windows, rooms, and any other items are approximate. No responsibility is taken for any error, omission, or mis-statement. This plan is for illustrative purposes only and should be used as such.
Drawn by EB Property Services. www.ebps.co.uk

