



## Marriott Close, Oxford

£385,000 2 Bedroom House



A two bedroom terraced house located in a suburban area of north Oxford. The property opens up on to a spacious living room with feature fireplace and wooden flooring. The separate kitchen area has appliances and leads through to a low maintenance garden with access to the garage. On the first floor there are two double bedrooms and bathroom with shower over the bath.

- 2 double bedrooms
- Bathroom with shower over bath
- Living room with space to dine
- Kitchen with appliances
- Garden & garage
- Convenient for Oxford ring-road

**Freehold**

**Lease: N/A**

**Service Charge: N/A**

**Ground Rent: N/A**

**Contact: 01865 302314**

**Website Ref: P139622**

**Inspired**   
Sales & Acquisitions  
FindersKeepers™





EPC rating: C

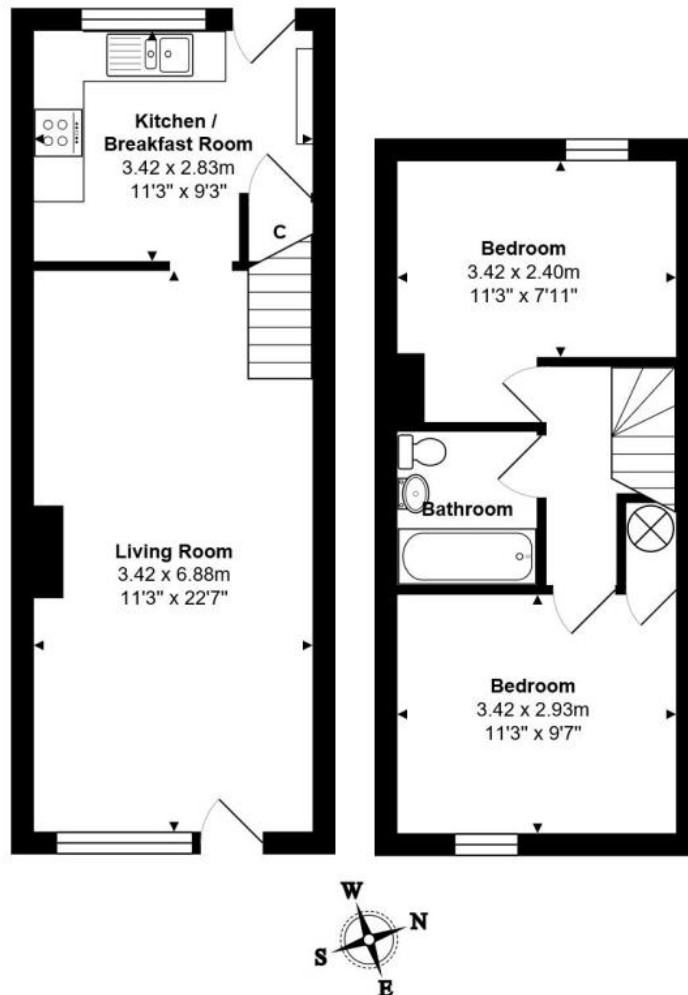
Parking: Garage

Council tax: Oxford District (B),  
Band C

Locality: Town/City

Motorway: M40 - J8

Train: Oxford



Approx Gross Internal Area: 61.8 m<sup>2</sup> ... 665 ft<sup>2</sup>

Whilst every attempt has been made to ensure the accuracy of the floor plan contained here, measurements of doors, windows, rooms, and any other items are approximate. No responsibility is taken for any error, omission, or mis-statement. This plan is for illustrative purpose only and should be used as such.  
Drawn by E8 Property Services. [www.e8ps.co.uk](http://www.e8ps.co.uk)