



## Michaelis Road

£360,000 2 Bedroom Flat



A super period conversion ground floor apartment in lovely maintained grounds close to the centre of this popular market town with convenient access to Oxford, Haddenham / Thame Parkway train station & M40. This stylishly apartment includes cosy under floor heating, high ceilings, open plan living space, integrated appliances, double bedroom with fitted wardrobe, en-suite bathroom with separate shower, second bedroom with storage cupboard, shower room & private parking space.

- Two double bedrooms
- Open plan living room/kitchen
- En suite shower to principle
- Ground floor apartment
- Private parking space

**Contact: 01865 302314**

Website Ref: P139516

**Leasehold**

**Lease: 109 years**

**Service Charge: £1713.16**

**Ground Rent: £200**

**Inspired**   
Sales & Acquisitions  
FindersKeepers™



EPC rating: E

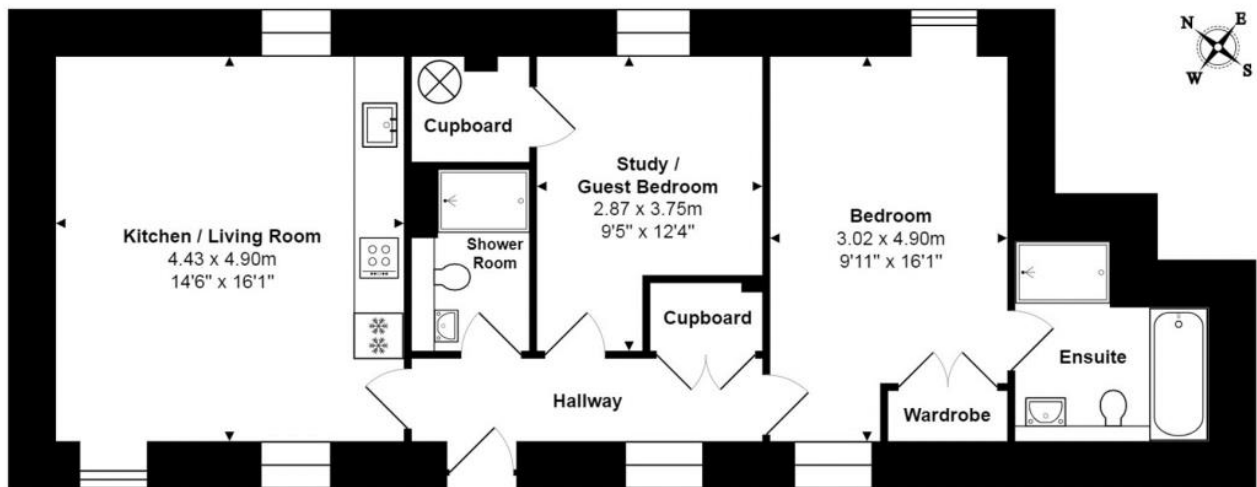
Parking: Off-street

Council tax: South Oxfordshire  
District, Band D

Locality: Town/City

Motorway: M40 - J7

Train: Haddenham and Thame



Approx. Gross Internal Area: 65.8 m<sup>2</sup> ... 708 ft<sup>2</sup>

Whilst every attempt has been made to ensure the accuracy of the floor plan contained here, measurements of doors, windows, rooms, and any other items are approximate. No responsibility is taken for any error, omission, or mis-statement. This plan is for illustrative purpose only and should be used as such.  
Drawn by E8 Property Services. [www.e8ps.co.uk](http://www.e8ps.co.uk)