



Islip Road, Oxford

£340,000 2 Bedroom Flat



A modern ground floor one bedroom apartment with allocated parking in north Oxford, just a short walk from Sunnymead & Cutteslowe Park.

- 2 double bedrooms including wardrobes to the main bedroom
- Family bathroom & en suite shower room
- Living area with space to dine
- Modern kitchen with appliances
- Off-street parking
- Within a short cycle of Oxford Parkway Train Station & Summertown High Street

Leasehold

Lease: 104 years

Service Charge: £1809.12

Ground Rent: £250

Contact: 01865 302314

Website Ref: P139217

Inspired 
Sales & Acquisitions
FindersKeepers™



EPC rating: C

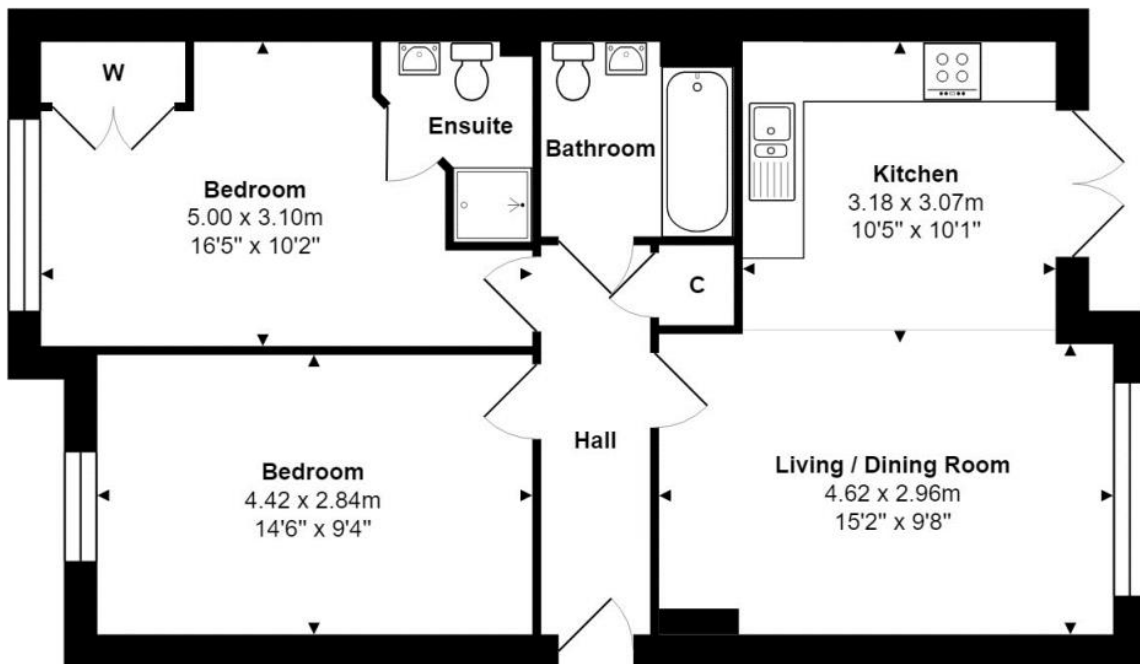
Parking: Off-street

Council tax: Oxford District (B),
Band E

Locality: Town/City

Motorway: M40 - J8

Train: Oxford Parkway



Approx. Gross Internal Area: 62.3 m² ... 670 ft²

Whilst every attempt has been made to ensure the accuracy of the floor plan contained here, measurements of doors, windows, rooms, and any other items are approximate. No responsibility is taken for any error, omission, or mis-statement. This plan is for illustrative purpose only and should be used as such.

Drawn by E8 Property Services. www.e8ps.co.uk