



## Buttercross Lane, Witney

£425,000 3 Bedroom House



Modern three bedroom townhouse on the popular Buttercross development in Witney. Arranged over three floors with excellent accommodation.

- 3 bedrooms, top floor bedroom with dressing area
- En suite shower room plus family bathroom and downstairs cloakroom/utility room
- Open plan living space/ kitchen with white goods included
- Rear garden with lawn and patio and 2 allocated parking spaces
- Excellent access to Witney town centre, local park and road links

**Freehold**

**Lease: N/A**

**Service Charge: N/A**

**Ground Rent: N/A**

**Contact: 01865 302314**

**Website Ref: P138858**

**Inspired**   
Sales & Acquisitions  
FindersKeepers™



EPC rating: B

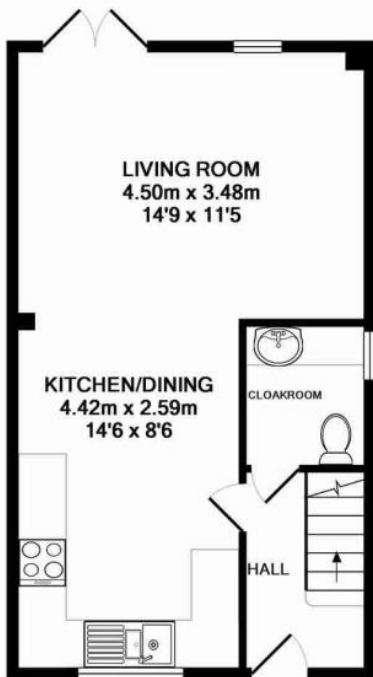
Parking: Off-street

Council tax: West Oxfordshire  
 District, Band D

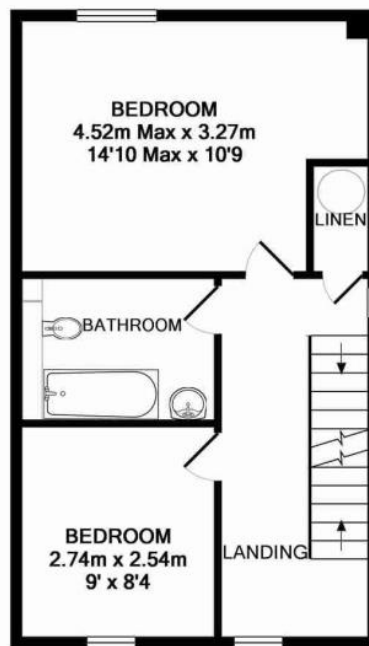
Locality: Town/City

Motorway: M40 - J8

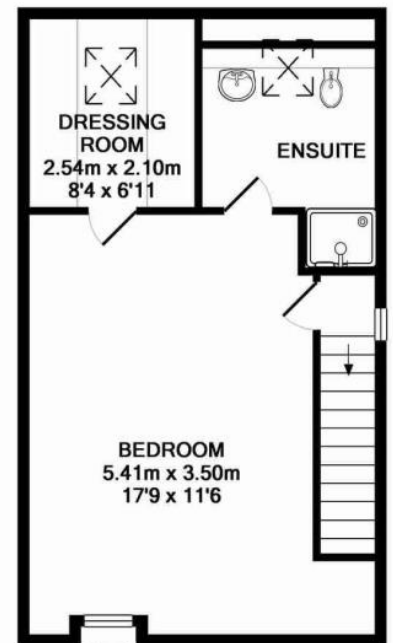
Train: Hanborough



GROUND FLOOR



FIRST FLOOR



SECOND FLOOR

**TOTAL APPROX. FLOOR AREA 106.4 SQ.M. (1145 SQ.FT.)**

Whilst every attempt has been made to ensure the accuracy of the floor plan contained here, measurements of doors, windows, rooms and any other items are approximate and no responsibility is taken for any error, omission, or mis statement. This plan is for illustrative purposes only and should be used as such by any prospective purchaser. Drawn by E8 Property Services. - www.e8ps.co.uk  
 Made with Metropix ©2016