



Buttercross Lane, Witney

£415,000 3 Bedroom House



An impressive and very well-presented three double bedroom townhouse on the popular Buttercross Lane development in Witney. There is an excellent modern kitchen & living room downstairs, opening to an enclosed rear garden from double doors. The master double bedroom is on the top floor with a dressing room & en-suite shower room. The property is close to The Leys park, 0.7 miles from Witney town centre & has 2 allocated parking spaces.

- 3 bedrooms: master includes dressing room & en-suite shower room
- Sitting room overlooking the garden
- Modern kitchen with white goods
- Attractive garden
- 2 allocated parking spaces

Contact: 01865 302314

Website Ref: P138857

Freehold

Lease: N/A

Service Charge: N/A

Ground Rent: N/A

Inspired 
Sales & Acquisitions
FindersKeepers™



EPC rating: B

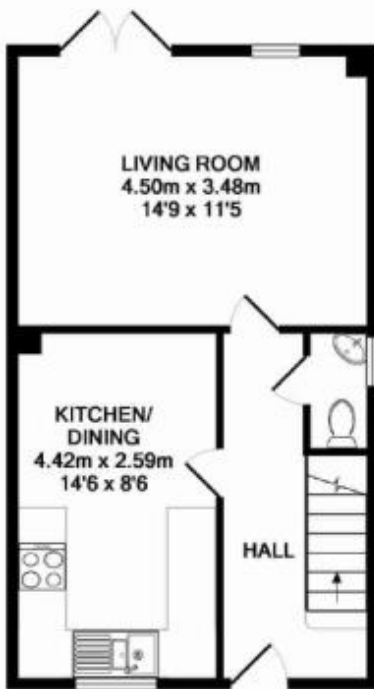
Parking: Off-street

Council tax: West Oxfordshire
 District, Band D

Locality: Town/City

Motorway: M40 - J8

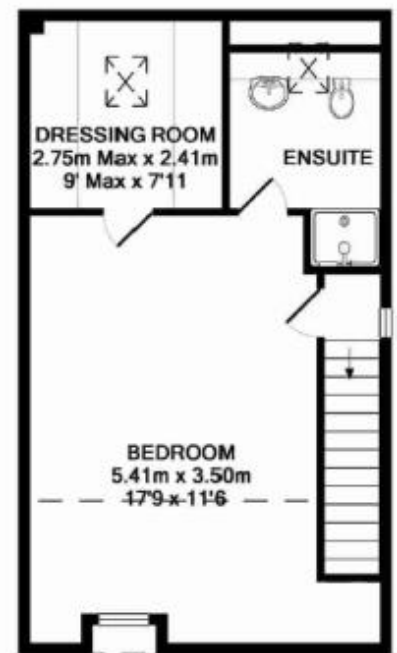
Train: Hanborough



GROUND FLOOR



FIRST FLOOR



SECOND FLOOR

TOTAL APPROX. FLOOR AREA 106.0 SQ.M. (1141 SQ.FT.)

Whilst every attempt has been made to ensure the accuracy of the floor plan contained here, measurements of doors, windows, rooms and any other items are approximate and no responsibility is taken for any error, omission, or mis statement. This plan is for illustrative purposes only and should be used as such by any prospective purchaser. Drawn by EB Property Services. - www.ebps.co.uk
 Made with Metropix ©2016