



## Lawton Avenue, Carterton

£135,000 1 Bedroom Flat



A tidy one bedroom first floor apartment located in the heart of Carterton town centre. Carterton is popular for its easy access to the A40 for Oxford or Cheltenham & is close to local shops & amenities. Ideal for first time buyers or investors with no onward chain.

- 1 bedroom
- Allocated parking
- Town centre location
- 964 year lease
- No onward chain
- Good starter home

**Leasehold**

**Lease: 964 years**

**Service Charge: £120**

**Ground Rent: £0**

**Contact: 01865 302314**

**Website Ref: P135400**

**Inspired**   
Sales & Acquisitions  
FindersKeepers™



EPC rating: D

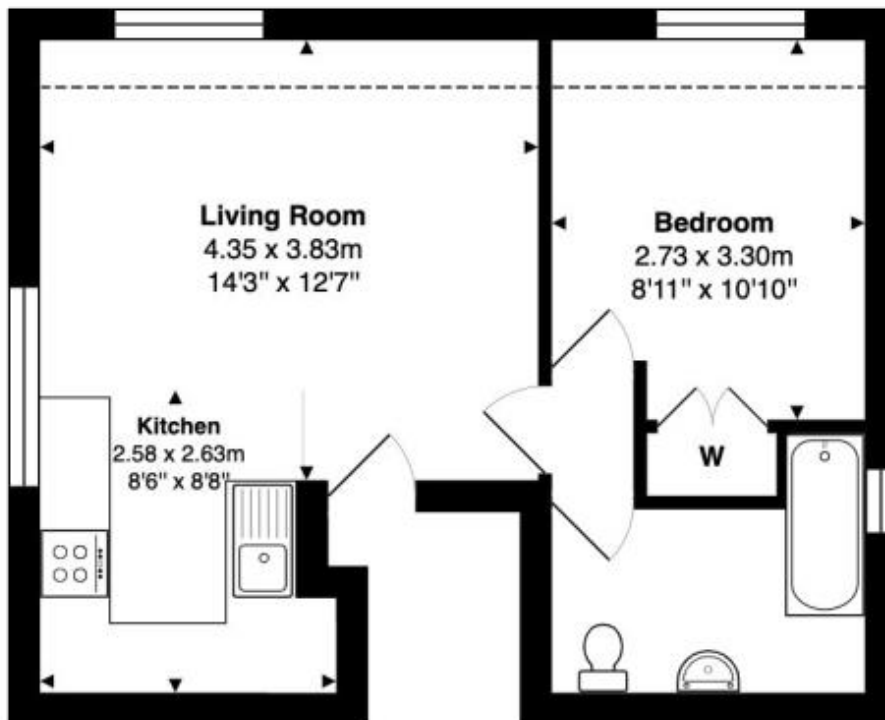
Parking: Off-street

Council tax: West Oxfordshire  
District, Band A

Locality:

Motorway: M40 - J8

Train:



### First Floor

Approx. Gross Internal Area: 37.1 m<sup>2</sup> ... 399 ft<sup>2</sup>

Whilst every attempt has been made to ensure the accuracy of the floor plan contained here, measurements of doors, windows, rooms, and any other items are approximate. No responsibility is taken for any error, omission, or mis-statement. This plan is for illustrative purposes only and should be used as such.  
Drawn by E8 Property Services. [www.e8ps.co.uk](http://www.e8ps.co.uk)

