

NO. **2** THROGMORTON
AVENUE

2,414 SQ FT (225 SQ M)

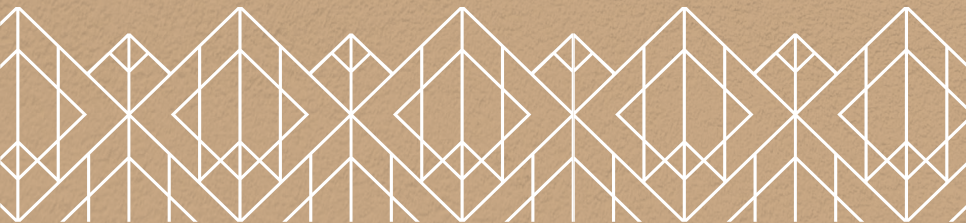
PREMIUM FITTED AND FURNISHED OFFICE SUITE TO LET

STUNNING
ORIGINAL
FEATURES

2,414 sq ft (255 sq m)

Boutique office floor with private terrace in a prime location.

This striking and prominent building offers Grade A office space within a 5 minute walk of Bank, Liverpool Street and Moorgate stations.





MODERN
SOPHISTICATED
DESIGN



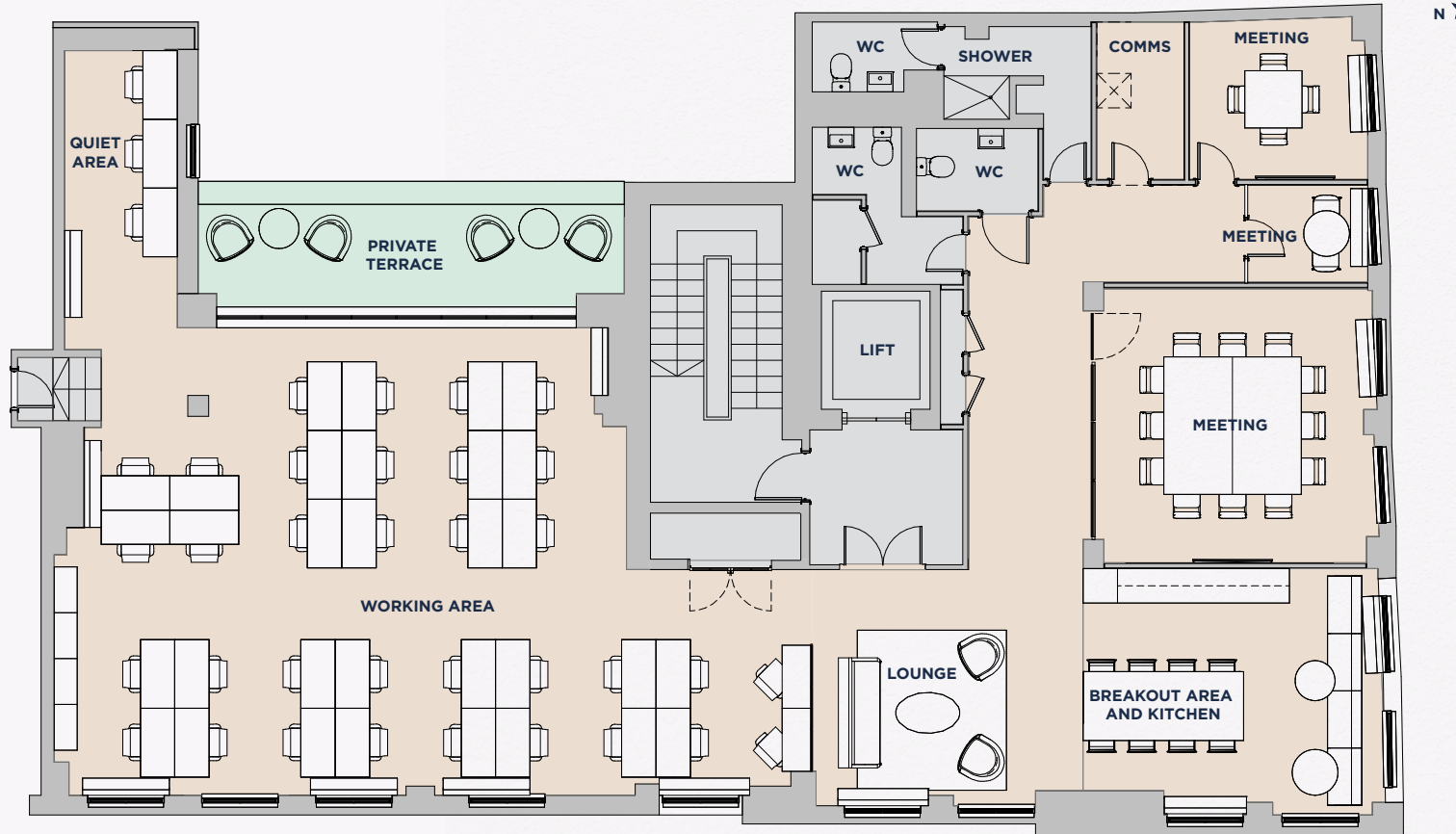
Flexible & efficient floor plate

The 4th floor has been refurbished and fitted-out to provide a furnished plug & play office suite, combining an adaptable layout with high quality finishes.



FOURTH FLOOR - 2,414 SQ FT (225 SQ M)

Floor plans are indicative.



PRIVATE
OUTDOOR
TERRACE

- 34 workstations
- 5 x hot desks
- Breakout area and kitchen
- 12-person meeting room
- 4-person meeting room
- 2-person meeting room
- Private outdoor terrace
- 3 WCs



FLEXIBLE,
ADAPTABLE
SPACES





CONTEMPORARY FINISHES

Excellent features and amenities

Distinguished, clean design finishes including recently refurbished reception and Grade A office floor offering a mixture of collaborative break out space, meeting rooms and open plan desking.

The building boasts high quality finishes and character features throughout.



Plug & Play



2 minute walk to Finsbury Circus



Fully cabled



Full height raised floor



Fully fitted, with furniture



New LED lighting



Recently refurbished reception



Fully air conditioned



Period character



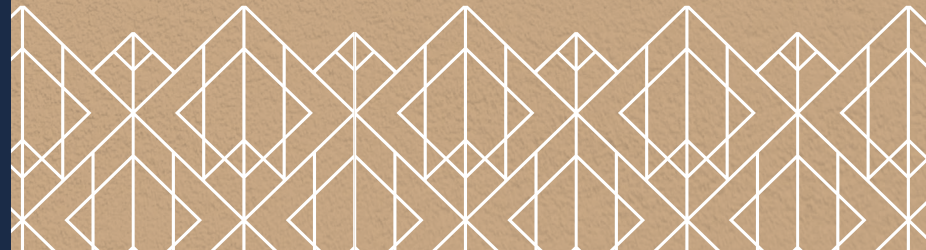
End of trip facilities



High quality finishes



Private terrace







HIGH QUALITY AMENITIES



Location

Situated in the most well connected area in all of London.

TUBE TRAVEL TIMES FROM

 BANK

-  **3 MINS**
WATERLOO
-  **6 MINS**
ALDGATE EAST
-  **7 MINS**
OXFORD CIRCUS
-  **9 MINS**
KING'S CROSS
-  **10 MINS**
EUSTON
-  **12 MINS**
WESTMINSTER

ELIZABETH LINE TRAVEL TIMES FROM

 LIVERPOOL ST

- 6 MINS**
FARRINGTON
- 13 MINS**
CANARY WHARF
- 13 MINS**
BOND STREET
- 15 MINS**
PADDINGTON
- 42 MINS**
HEATHROW
- 68 MINS**
READING



 WALKING TIMES FROM THE PROPERTY

2 MINS
LIVERPOOL ST

5 MINS
BANK

5 MINS
MOORGATE

8 MINS
CANNON ST



SPITALFIELDS MARKET



FINSBURY CIRCUS GARDENS

AN ARRAY OF CHARMING EATERIES



THE NED, BANK STATION

A vibrant neighbourhood

The area is home to some of the most exciting food and beverage and leisure offerings in London. Whether you're after a 24-hour sky terrace, Michelin star lunch or a luxury shopping experience, the City delivers it all.



THE ROYAL EXCHANGE



THE NED



BROADGATE CIRCLE

Amenities

This vibrant area boasts some of the best bars and eateries around.

Cafés & Bars

- 1 The Jugged Hare
- 2 The Brewery
- 3 Rosslyn Coffee
- 4 Coco di Mama
- 5 Black Sheep Coffee
- 6 The Tokenhouse
- 7 Puttshack
- 8 The Globe
- 9 Barbie Green

Restaurants

- 1 Hawksmoor
- 2 Burger & Lobster
- 3 Coq D'argent
- 4 Manicomio
- 5 Brigadiers
- 6 The Ned
- 7 Caravan
- 8 Eataly
- 9 Homeslice
- 10 Coya
- 11 Temper City
- 12 Mint Leaf Lounge
- 13 Enoteca Da Luca Guildhall
- 14 L'Entrecôte

Hotels

- 1 South Place Hotel
- 2 Apex London Wall Hotel
- 3 Pan Pacific London
- 4 The Ned
- 5 Andaz London Liverpool St

Culture

- 1 Museum of London
- 2 Barbican Centre
- 3 St Paul's Cathedral
- 4 Guildhall
- 5 St Mary Aldermanbury
- 6 Royal Exchange

Gyms

- 1 Kobox
- 2 Barry's Bootcamp
- 3 PureGym
- 4 Gymbox
- 5 Digme
- 6 Virgin Active



**AVISON
YOUNG**

Avison Young
65 Gresham Street
London EC2V 7NQ

© 2024 Avison Young (UK) Ltd

Jamie Major
07799 341 569
jamie.major@avisonyoung.com

Alice Elder
07962 342 826
alice.elder@avisonyoung.com



BNP PARIBAS

BNP Paribas Real Estate
5 Aldermanbury Square
London EC2V 7BP

Tim Williams
07717 576 894
tim.williams@realestate.bnpparibas

Ben Rainbow
07909 487 189
ben.rainbow@realestate.bnpparibas

Avison Young and BNP Paribas Real Estate hereby give notice that the information provided either for itself, for any joint agents or for the vendors lessors of this property whose agent Avison Young and BNP Paribas Real Estate are in this brochure is provided on the following conditions: 1) The particulars are set out as a general outline only, for the guidance of intending purchasers and/or lessees and do not constitute an offer or contract, or part of an offer or contract. 2) All descriptions, dimensions and references to this property's condition and any necessary permission for use and occupation, and any other relevant details, are given in good faith and are believed to be correct. However, any intending purchasers or tenants should not rely on them as statements or representations of fact but satisfy themselves of their correctness by inspection or otherwise. 3) No person in the employment of Avison Young, BNP Paribas Real Estate, or any joint agents, has any authority to make or give any representation or warranty whatsoever in relation to the property or properties in this brochure. 4) All prices quoted are exclusive of VAT. 5) Avison Young and BNP Paribas Real Estate shall have no liability whatsoever in relation to any documents contained within the brochure or any elements of the brochure which were prepared solely by third parties, and not by Avison Young and BNP Paribas Real Estate. Anti-Money Laundering: To comply with our legal responsibilities for Anti-Money Laundering, it will be necessary for the successful bidder to provide information necessary to complete these checks before the deal is completed. Information required will include: • Corporate structure and ownership details. • Identification and verification of ultimate beneficial owners. • Satisfactory proof of the source of funds for the Buyers / funders / lessee. **April 2024. FETCHAGENCY.COM**