

THE WHITE CHAPEL BUILDING SPACE AVAILABLE

THIRD FLOOR


From 22,850 sq ft

Fully fitted offices, ready to occupy

10 WHITECHAPEL HIGH STREET E1 8QS

Executive summary

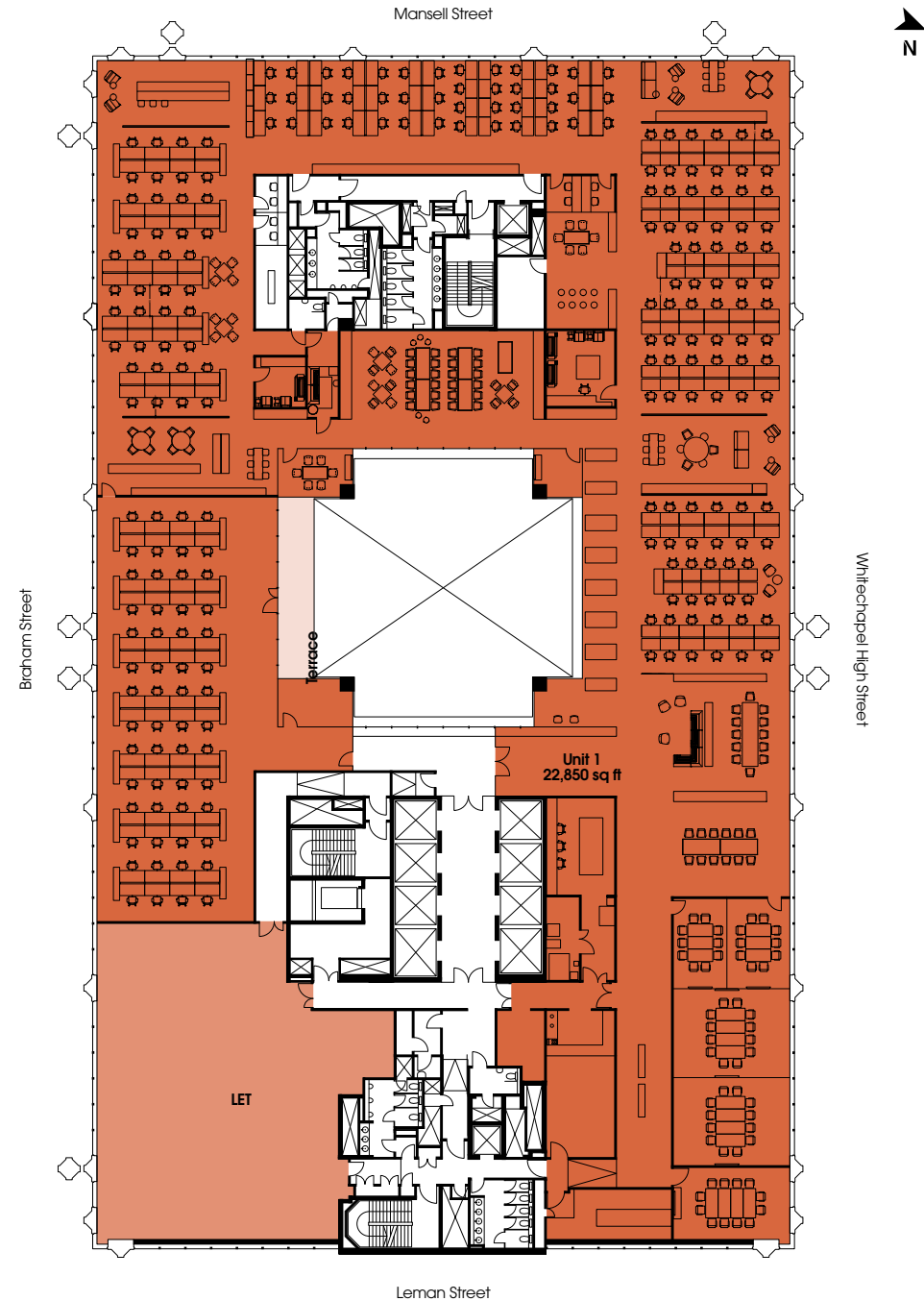


- 22,850 sq ft of fully fitted office space
- 7,000 sq ft ground-floor reception and lobby featuring communal workstations, a lounge and multiple breakout spaces
- Dramatic 7-storey central atrium
- Lift lobby and 8 passenger lifts
- Grind independent café provides a dedicated service to tenants and visitors
- Private outdoor terrace with café seating and access to Braham Park green space
- Street-level cycle storage area with 187 bike racks and 20 showers
- WCs with vanity units
- Floor-to-ceiling heights of 3.15m
- Active and passive 2-pipe chilled beams throughout the office floors
- WiredScore Certified Gold 
- Moments from Aldgate & Aldgate East tube stations and both Whitechapel and Liverpool Street Elizabeth line stations

Third floor

From 22,850 sq ft / 2,123 sq m

- Reception and lounge area
- 175 x open plan desks
- 48 x hot desking spaces
- 7 x meeting rooms
 - 3 x 12 person
 - 2 x 10 person
 - 1 x 6 person
 - 1 x 4 person
- 4 x 2 person focus pods
- Large kitchenette
- Multiple breakout areas
- 2 x comms rooms



*Approximate fit-out. Subject to final inspection

High quality fit out, ready to move into from May 2023



Storage space



Café and breakout area



Arrival and reception area



One of three 12 person meeting rooms



Open plan desk space along Whitechapel High Street



Open plan desk space with excellent natural light

Belong to something bigger with Derwent London. We nurture a sense of unity and empower members with exclusive amenities and tools



The world of Derwent London in your pocket

Unlock a curated collection of features and benefits with the DL/App, available to all our tenants. Book DL/78 meeting rooms with discounted rates, secure a place at cultural events, lectures and screenings, and access exclusive offers and discounts on a wide range of products and services. You can manage it all effortlessly in a few clicks, and handy notifications ensure you never miss a thing.



Reception at DL/78



Club lounge at DL/78

DL/78.W1

78 Charlotte Street, Fitzrovia W1

Your home in the heart of the West End. Launched in October 2021, DL/78 is a hybrid space for connection and collaboration in the heart of Fitzrovia. A curated environment in which to work, meet, socialise and be inspired for our creative Derwent London community.

Drop in, find a seat in the Club Lounge or book a conference room configured to your needs. The space is also available for exclusive hire for townhalls or other large gatherings. It hosts cultural events, talks and lectures, and film and sports screenings. The street-level café offers a diverse all-day menu. The Wellness Room offers a range of treatments created to relax and reinvigorate.

[Watch our video for information](#)

DL/28.EC1

28 Featherstone Street, Old Street EC1

Following the successful launch of DL/78 in Fitzrovia, we are excited to be creating our second multipurpose destination, DL/28, over ground and lower ground floors at The Featherstone Building. It will reflect our design-led approach, creating an inspiring and adaptable space.

With a targeted opening from Autumn 2023, the space aims to offer:

- Open plan workspace
- Bookable meeting rooms for group work sessions
- One and two person phone booths
- Library for quiet working
- Multipurpose event space with self-contained entrance
- On-site café
- Curated events programme to socialise, learn and share experiences
- All connected via the Derwent London

BNP Paribas Real Estate
020 7338 4000

James Strevens

james.strevens@realestate.bnpparibas
+44 (0) 7824 414 682

Penny McAfeer

penny.mcafeer@realestate.bnpparibas
+44 (0) 7880 078 703

Compton
020 7101 2020

Shaun Simons

ss@compton.london
+44 (0) 7788 423 131

Elliott Stern

es@compton.london
+44 (0) 7834 918 700

Josh Perlmutter

jp@compton.london
+44 (0) 7814 699 096

Cushman & Wakefield
020 3296 3000

Tim Plumbe

tim.plumbe@cushwake.com
+44 (0) 7768 146 280

Eleanor Reed

eleanor.reed@cushwake.com
+44 (0) 7860 267 086

Holly Hamer

holly.hamer@cushwake.com
+44 (0) 7471 725112

Misrepresentation Act

Whilst every effort has been made to ensure accuracy, no responsibility is taken for any error, omission or misstatement in these particulars which do not constitute an offer or contract. No representation or warranty whatever is made or given either during negotiations or in particular by the vendor, lessors or agents BNP Paribas Real Estate, Compton and Cushman & Wakefield. All figures are exclusive of rates, service charge, VAT and all other outgoings.

The agents have not tested the services. Where stated floor areas are approximate. Date of preparation December 2022.



thewhitechapelbuilding.london

DERWENT
LONDON