
35 EC3
GOSH

35 Great St Helen's, London EC3

**Boutique Fully Fitted and
Furnished Office Suite**

2,648 Sq Ft (246 Sq M)

LAST AVAILABLE FLOOR OFFERING FULLY FITTED, FURNISHED AND CABLED CAT B SPACE



Concierge



2 x 8 person
passenger lifts



4 pipe fan
coil air
conditioning



Fully
accessible
raised floors



Metal tile
suspended
ceilings



Fully
cabled



Wired for
power & data



Bicycle storage
& showers



EPC rating B41



LED lighting



Fully fitted
Cat B



Live
internet



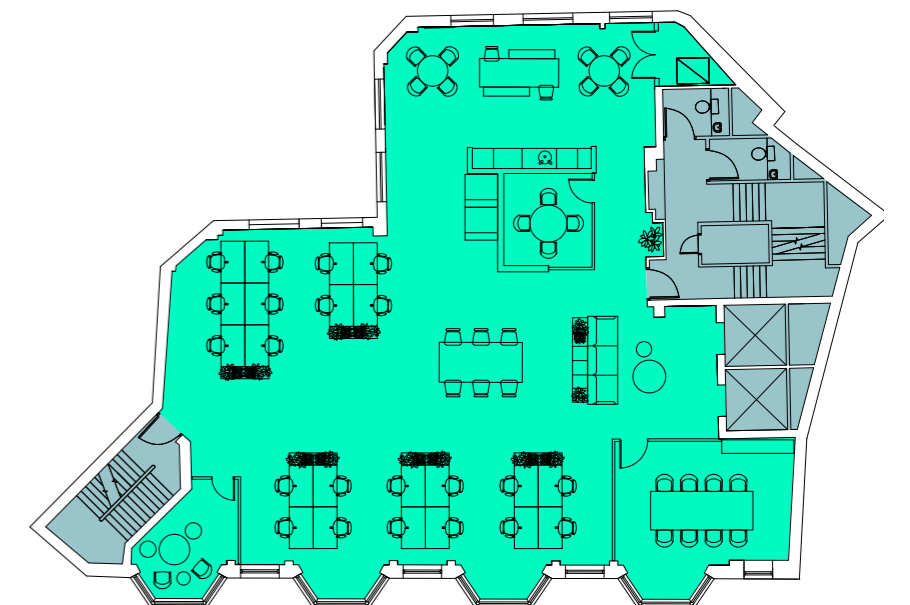
2ND FLOOR SPACE PLAN

2,648 sq ft (248 sq m)

Workstations	22
Hotdesks	6
Informal meeting room	1
4 person meeting room	1
8 person meeting room	1
Breakout areas	1
Waiting area	1
Kitchenette	1

N
▲ Plan not to scale,
for indicative purposes only.

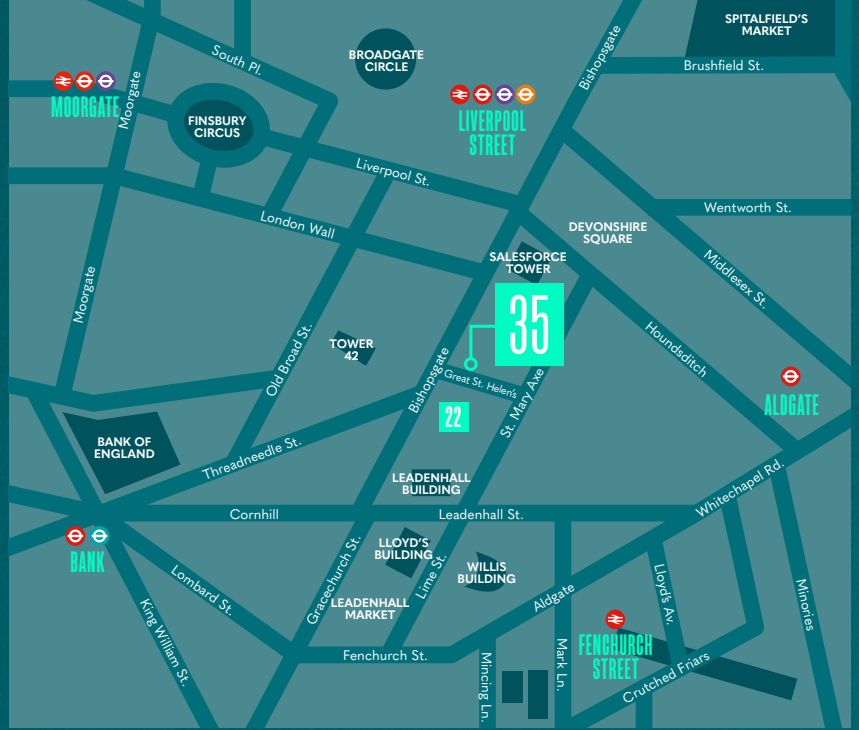
■ Office ■ Core



Reception



Entrance



LOCATED IN THE CITY CORE

The building is situated in the heart of the City tower cluster, between Bishopsgate and St Mary Axe, adjacent to new 22 Bishopsgate tower. It benefits from the finest amenities the City has to offer and is well connected with Bank and Liverpool Street stations close by.



LIVERPOOL STREET



5 mins walk

BANK



6 mins walk

FENCHURCH STREET



7 mins walk

MONUMENT



8 mins walk



Tim Williams
07717 576 894
tim.williams@realestate.bnpparibas

Chris Sutcliffe
07970 831 250
crs@newtonperkins.com

Ben Rainbow
07909 487 189
ben.rainbow@realestate.bnpparibas

Nick Russell-Smith
07918 588 107
nrs@newtonperkins.com

