



OFFICE TO LET

2 BABMAES STREET

London, SW1Y 6HD

2 BABMAES STREET OFFERS 1,336 SQ FT OF FITTED OFFICE SPACE.

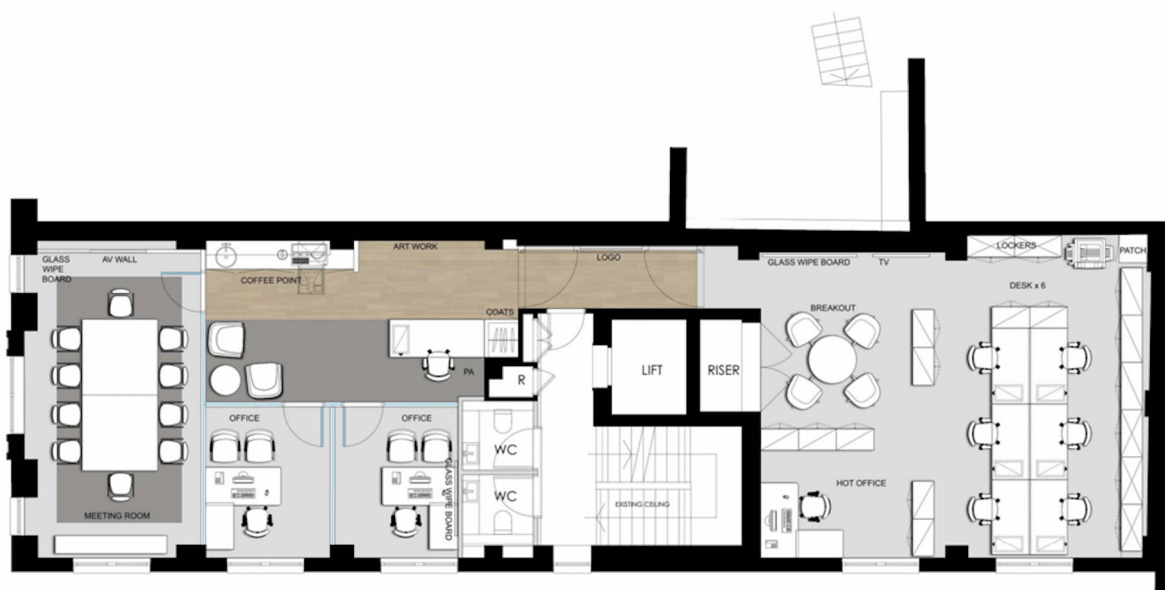
1,336 SQ FT (124.12 SQ M)



**BNP PARIBAS
REAL ESTATE**

www.realestate.bnpparibas.co.uk

DETAILS



DESCRIPTION

The building has been re-designed by MoreySmith. The entrance, with its canopy made from bronze anodised aluminium, leads into a stylish reception with marble flooring, feature white gold panelled walls and brass trim detailing. These finishes are continued through into the automatic passenger lift car that serves all floors.

ACCOMMODATION

The accommodation comprises the following areas:

Name	sq ft	sq m	Availability
3rd	1,336	124.12	Available
Total	1,336	124.12	

KEY FEATURES

- Building host
- Cycle parking facility
- Shower and changing facilities
- WC's on every floor
- Automatic passenger lift
- Fully accessible raised floors
- LED lighting throughout
- VRF cooling system

OUTGOINGS

- **Rent:** £99.50 per sq ft
- **Rates:** £38.42 per sq ft
- **Service charge:** £17.44 per sq ft [Please note their is also a sinking fund charge of £1.00 per sq ft and and insurance charge of £0.84 per sq ft]

2 BABMAES STREET

London, SW1Y

TO REQUEST A VIEWING CALL US 0207 629 7282



**BNP PARIBAS
REAL ESTATE**

www.realestate.bnpparibas.co.uk

LOCATION



The location boasts a wealth of high end amenities with the world renowned Jermyn Street on the doorstep, whilst Soho has a much more contemporary offering with Ham Yard Hotel and Rapha Cycle Club all within a 10 minute walk. The building is ideally located within a three minute walk of Piccadilly Circus underground station, while Green Park and Charing Cross stations are also a short walk away.

CONTACT US

Alex Walters
020 7318 5043
alex.walters@realestate.bnpparibas

Harry Radford
07721 459564
harry.radford@realestate.bnpparibas

BNP Paribas Real Estate (West End)
24 Savile Row, London, W1S 2ES

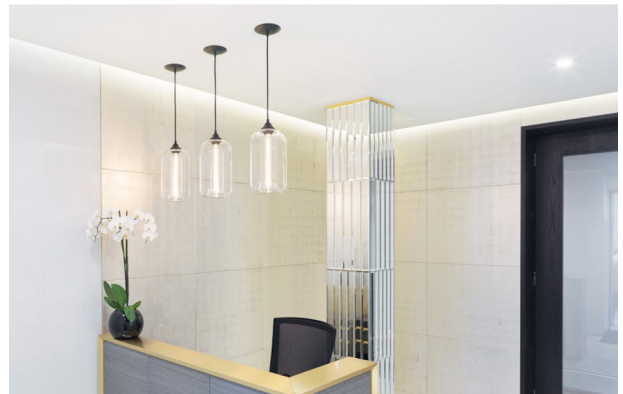
www.realestate.bnpparibas.co.uk
0207 629 7282
realestate.enquiries@bnpparibas.com
[linkedin.com/company/bnp-paribas-real-estate/](https://www.linkedin.com/company/bnp-paribas-real-estate/)
[@BNPPRE_UK](https://twitter.com/BNPPRE_UK)

Misrepresentation Act 1967: BNP Paribas Real Estate Advisory & Property Management UK Limited for themselves and for the vendor(s) or lessor(s) of this property whose agents they are, give notice that: 1. These particulars do not constitute, nor constitute any part of, an offer or contract. 2. None of the statements contained in these particulars as to the property are to be relied on as statements or representations of fact. 3. Any intending purchaser or lessee must satisfy himself by inspection or otherwise as to the correctness of each of the statements contained in these particulars. 4. The vendor(s) or lessor(s) do not make or give and neither BNP Paribas Real Estate Advisory & Property Management UK Limited nor any person in their employment has any authority to make or give, any representation or warranty whatever in relation to this property. Finance Act 2013: Unless otherwise stated all prices and rents are quote exclusive of VAT. The Business Protection from Misleading Marketing Regulations 2008: These details are believed to be correct at the time of compilation but may be subject to subsequent amendment. Generated by Agentsinsight / Generated on 23/10/2023

2 BABMAES STREET, LONDON, SW1Y 6HD
TO REQUEST A VIEWING CALL US ON 0207 629 7282



www.realestate.bnpparibas.co.uk



2 BABMAES STREET, LONDON, SW1Y 6HD
TO REQUEST A VIEWING CALL US ON 0207 629 7282



www.realestate.bnpparibas.co.uk

