



OFFICE TO LET

## 7 HOLYROOD STREET

London, SE1 2EL

FITTED OUT OFFICES IN FORMER WAREHOUSE BUILDING. HIGH CEILINGS,  
EXPOSED STRUCTURAL STEEL, CLOSE TO LONDON BRIDGE.

2,000 TO 6,750 SQ FT (185.81 TO 627.10 SQ M)

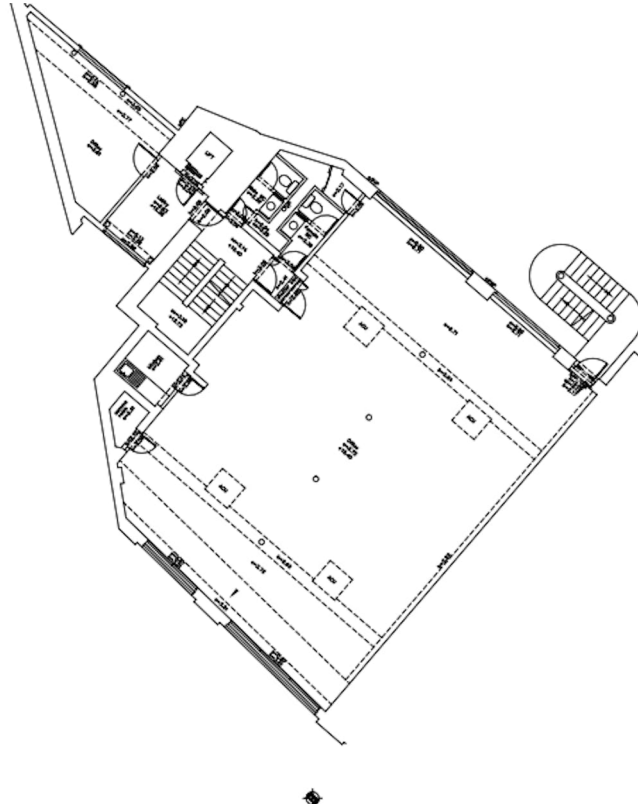


**BNP PARIBAS  
REAL ESTATE**

[www.realestate.bnpparibas.co.uk](http://www.realestate.bnpparibas.co.uk)



## DETAILS



### DESCRIPTION

Fitted out offices in trendy SE1 Location.

### ACCOMMODATION

The accommodation comprises of the following

Name	sq ft	sq m	Tenure	Availability
3rd	2,250	209.03	To let	Available
Ground	2,000	185.81	To let	Under Offer
Lower Ground	2,500	232.26	To let	Available
<b>Total</b>	<b>6,750</b>	<b>627.10</b>		

### KEY FEATURES

- Opportunity for self-contained entrance on the Ground floor
- Fitted office suites
- 2 x meeting rooms
- Kitchenette
- Comms room
- Air conditioning
- Raised floor
- Shower facilities
- Secure bike storage on the Estate

### OUTGOINGS

- **Rent:** £32.50 - £49.50 per sq ft
- **Rates:** £15.30 per sq ft
- **Service charge:** £11.55 per sq ft
- **Estate charge:** n/a

7 HOLYROOD STREET

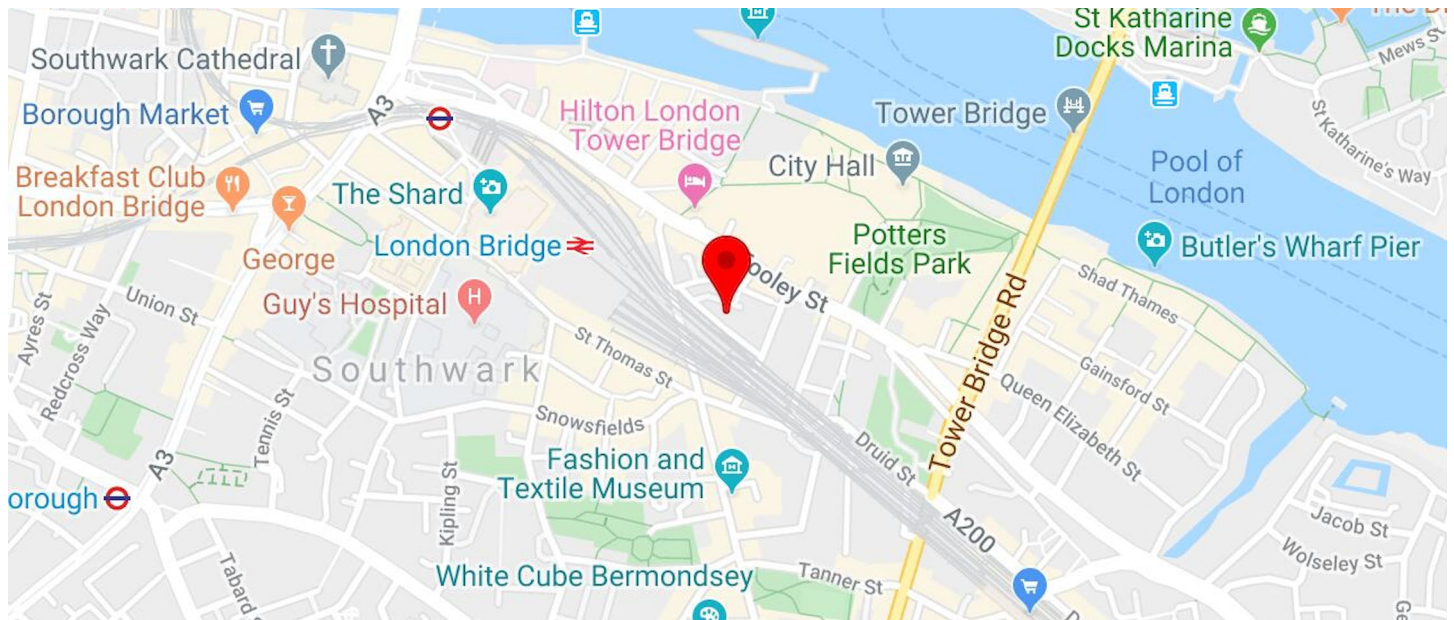
London, SE1

TO REQUEST A VIEWING CALL US 0207 629 7282



www.realestate.bnpparibas.co.uk

## LOCATION



5 minutes' walk from newly opened London Bridge station.

### CONTACT US

Katrina Love  
07818290253  
[Katrina.Love@realestate.bnpparibas](mailto:Katrina.Love@realestate.bnpparibas)

Harry Radford  
07721 459564  
[harry.radford@realestate.bnpparibas](mailto:harry.radford@realestate.bnpparibas)

Jack Saunders  
07818 539 177  
[jack.saunders@realestate.bnpparibas](mailto:jack.saunders@realestate.bnpparibas)

BNP Paribas Real Estate (West End)  
24 Savile Row, London, W1S 2ES

[www.realestate.bnpparibas.co.uk](http://www.realestate.bnpparibas.co.uk)  
0207 629 7282  
[realestate.enquiries@bnpparibas.com](mailto:realestate.enquiries@bnpparibas.com)  
[linkedin.com/company/bnp-paribas-real-estate/@BNPPRE\\_UK](https://www.linkedin.com/company/bnp-paribas-real-estate/@BNPPRE_UK)

Misrepresentation Act 1967: BNP Paribas Real Estate Advisory & Property Management UK Limited for themselves and for the vendor(s) or lessor(s) of this property whose agents they are, give notice that: 1. These particulars do not constitute, nor constitute any part of, an offer or contract. 2. None of the statements contained in these particulars as to the property are to be relied on as statements or representations of fact. 3. Any intending purchaser or lessee must satisfy himself by inspection or otherwise as to the correctness of each of the statements contained in these particulars. 4. The vendor(s) or lessor(s) do not make or give and neither BNP Paribas Real Estate Advisory & Property Management UK Limited nor any person in their employment has any authority to make or give, any representation or warranty whatever in relation to this property. Finance Act 2013: Unless otherwise stated all prices and rents are quote exclusive of VAT. The Business Protection from Misleading Marketing Regulations 2008: These details are believed to be correct at the time of compilation but may be subject to subsequent amendment. Generated by Agentsinsight / Generated on 06/12/2023