



£1,000,000

Carleton House, Boulevard Drive, Colindale NW9



 3
Bedrooms

 3
Bathrooms

257 Oakleigh Road North, Whetstone, London N20 0DG |
justask@talbies.co.uk

020 3397 2474



Nestled within the heart of the ever popular Beaufort Park development is this absolutely stunning 7th floor penthouse suite

Boasting 3 spacious double bedrooms, each with their own stunning en-suites, this property is all about it's luxuries. Including, but not limited to, each of the bedrooms having large amounts of built-in wardrobes, the beautifully modern fitted kitchen with handle-less cupboards and marble worktops plus island, engineered wood flooring, additional guest WC and loads of storage. There's also not 1, but 2 large private terraces that flank this amazing apartment AND a TV within the main bedroom en-suite

Additional features of this property are perks such as air-conditioning and filtration in most rooms, 24hr on-site management, underground gated parking, communal green spaces and last, but by no means least, a residents only gym with swimming pool and spa.

In terms of location, this beautiful property is set within a development that consists of several restaurants, cafe and even a Tesco Express. Transport links of Colindale station are only a short walk away

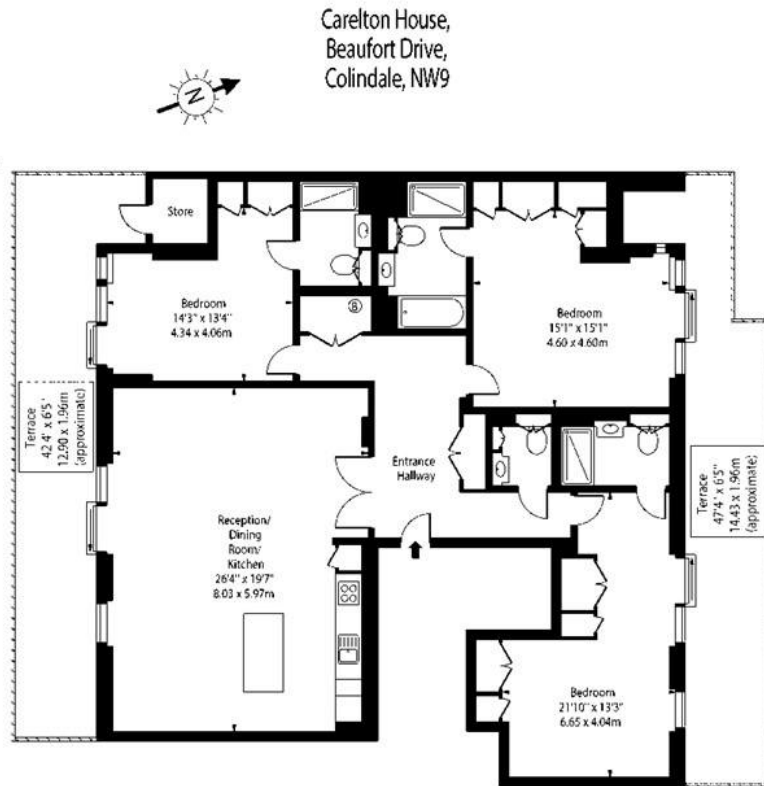
Viewings highly recommended for this stunning 3 double bedroom penthouse apartment

Tenure = Leasehold

Lease = TBC

Service Charge = Approx. £8,400pa

Ground Rent = Approx. £250pa



Seventh Floor

Approx Gross Internal Area 1604 Sq Ft - 149.01 Sq M
(Excluding Store)

Energy Efficiency Rating		Current	Potential
Very energy efficient - lower running costs			
(92-100)	A		
(81-91)	B		
(69-80)	C		
(55-68)	D	63	63
(39-54)	E		
(21-38)	F		
(1-20)	G		
Not energy efficient - higher running costs			
England, Scotland & Wales		EU Directive 2002/91/EC	

