



## WATERLOO GARDENS, MILNER SQUARE, 1 BED APARTMENT

£2,400

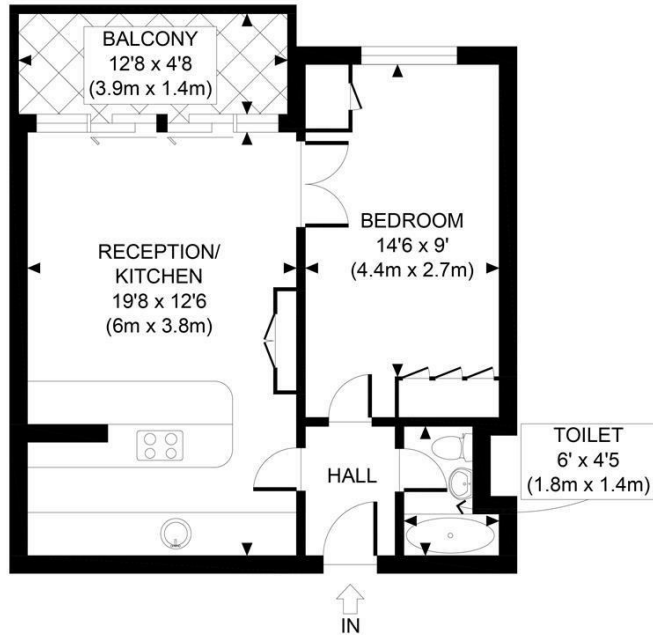
A recently refurbished, one bedroom 2nd floor apartment set within the popular development of Waterloo Gardens.

The property offers a good sized reception room with French doors that open out to a private balcony, allowing plenty of natural light into the room. The kitchen is open plan which clearly defines the space and offers ample storage. There is further in-built wardrobe space in the double bedroom, and a modern sleek tiled bathroom.

Waterloo Gardens benefits from a day time caretaker, lift access and bike storage within the gated area.

The popular Waterloo Gardens development in which this apartment is set is located at the northern end of the street. The location has a huge variety of

**Hemmingfords**



GROSS INTERNAL  
FLOOR AREA 454 SQ FT



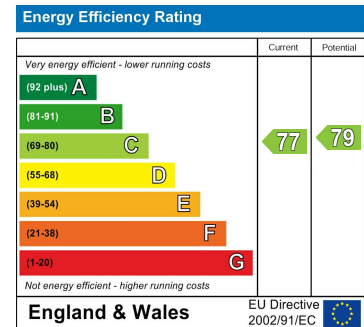
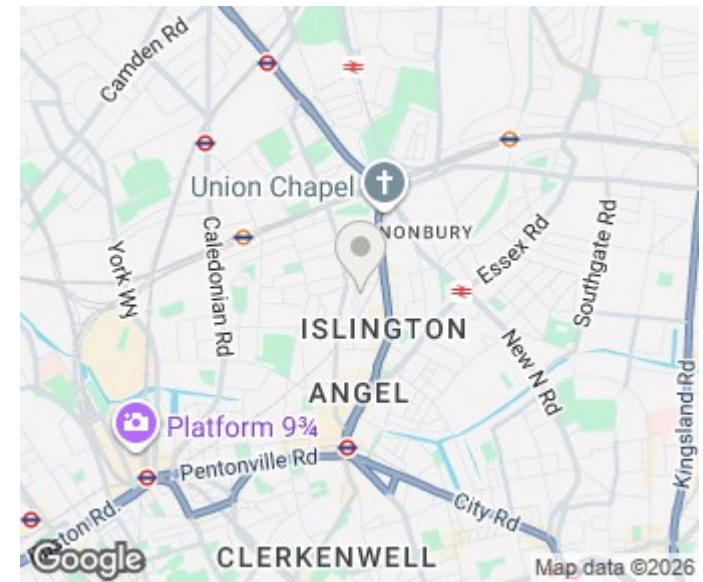
**APPROX. GROSS INTERNAL FLOOR AREA 454 SQ FT / 42 SQM**

Disclaimer: Floor plan measurements are approximate and are for illustrative purposes only. While we do not doubt the floor plan accuracy and completeness, you or your advisors should conduct a careful, independent investigation of the property in respect of monetary valuation

Waterloo Gardens

date 01/11/24

photoplan



Agents Note: Whilst every care has been taken to prepare these particulars, they are for guidance purposes only. All measurements are approximate and are for general guidance purposes only and whilst every care has been taken to ensure their accuracy, they should not be relied upon and potential buyers/tenants are advised to recheck the measurements

Hemmingfords Sales  
34 Upper Street  
London  
N1 0PN

02038907470  
info@hemmingfords.co.uk  
www.hemmingfords.co.uk

**Hemmingfords**