

CAMBRIDGE HOUSE, MAYES ROAD, WOOD

2 BED APARTMENT

£2,250 PCM

A brand new luxury two double bedroom, second floor (Lift) apartment situated in an impressive Victorian conversion offering wood flooring throughout and high ceilings.

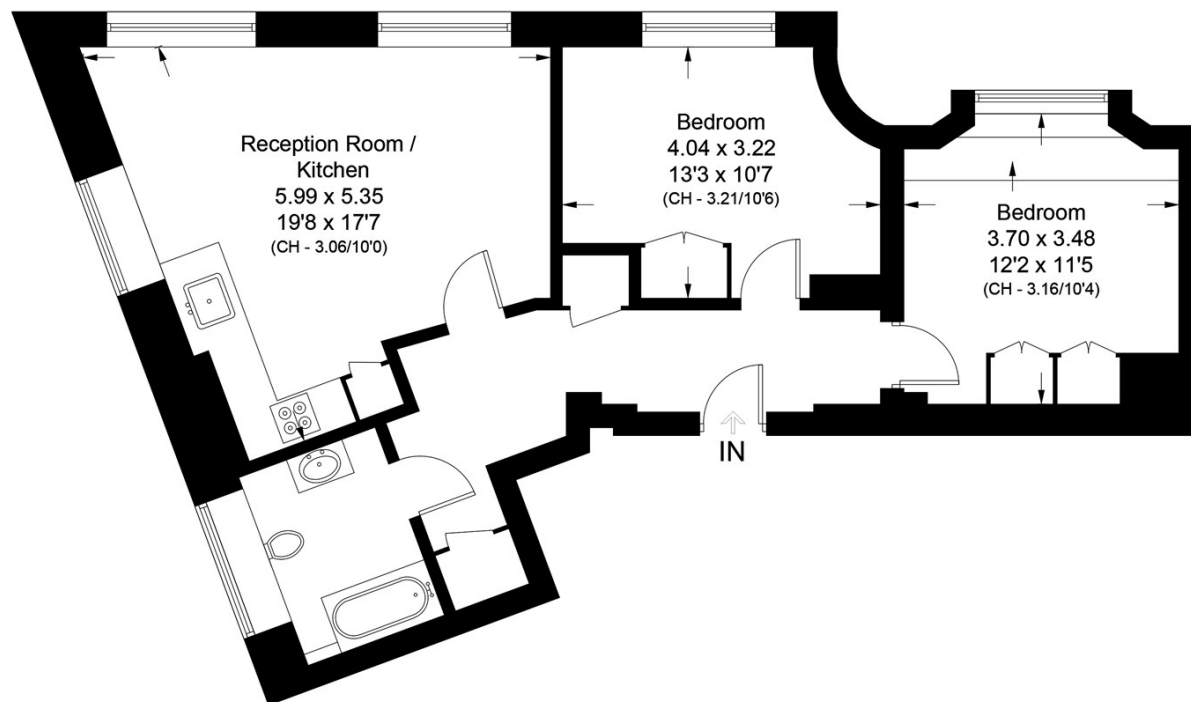
The property comprises of a spacious living room, large windows allowing plenty of natural light, fully integrated kitchen, two double bedrooms with fitted wardrobes and a modern tiled bathroom.

Situated moments from Alexandra Park, Palace and Wood Green underground stations (Piccadilly Line).

Hemmingfords

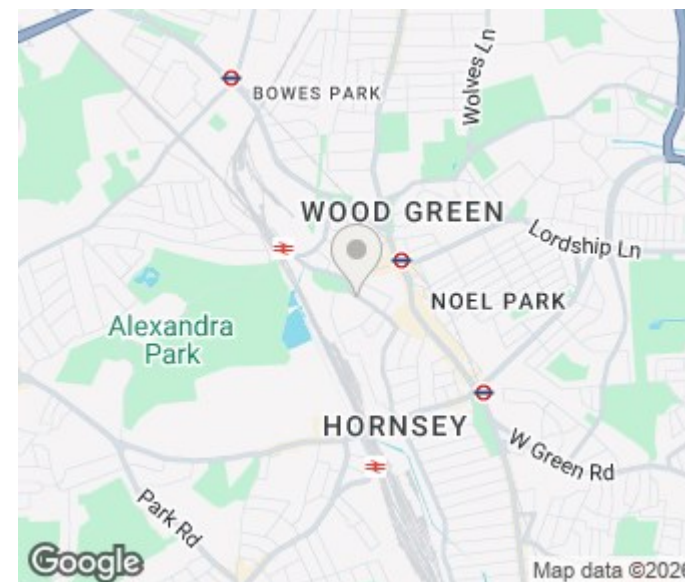
Cambridge House, N22

Approximate Gross Internal Area = 64.5 sq m / 694 sq ft



First Floor

Illustration for identification purposes only, measurements are approximate,
not to scale. floorplansUsketch.com © (ID726628)



| Energy Efficiency Rating | | |
|---|----------------------------|-----------|
| | Current | Potential |
| Very energy efficient - lower running costs | | |
| (92 plus) A | | |
| (81-91) B | | |
| (69-80) C | | |
| (55-68) D | | |
| (39-54) E | | |
| (21-38) F | | |
| (1-20) G | | |
| Not energy efficient - higher running costs | | |
| England & Wales | EU Directive 2002/91/EC | |

Agents Note: Whilst every care has been taken to prepare these particulars, they are for guidance purposes only. All measurements are approximate and are for general guidance purposes only and whilst every care has been taken to ensure their accuracy, they should not be relied upon and potential buyers/tenants are advised to recheck the measurements

Hemmingfords Lettings
34 Upper Street
London
N1 0PN

020 3890 7470
info@hemmingfords.co.uk
www.hemmingfords.co.uk

Hemmingfords