



DORSET STREET, MARYLEBONE, W1U

2 BED APARTMENT

£4,000

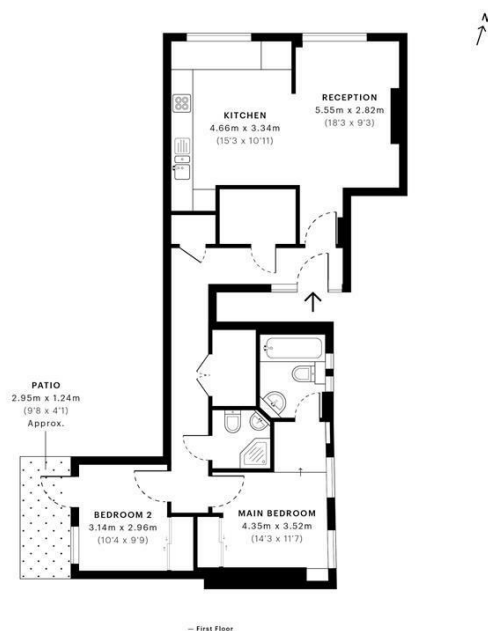
Hemmingfords are pleased to present this two double bedroom, two bathroom apartment just off of Baker Street. Property features include high ceilings, wood flooring, large windows offering plenty of natural daylight throughout the apartment. The property consists of a modern kitchen with a breakfast bar, two large double bedrooms and two bathrooms.

Located in the heart of London with quick access to Baker Street and Marylebone stations this property is also within a short walking distance from Oxford Street, Edgware Road, Marble Arch and Bond Street stations. Plenty of bars, shops and restaurants on offer.

Hemmingfords

Dorset Street, W1U
CAPTURE DATE: 25/03/2022 LASER SCAN POINTS: 2,170,897

GROSS INTERNAL AREA
71.28 sqm / 767.25 sqft



GROSS INTERNAL AREA (GIA)
The footprint of the property
71.28 sqm / 767.25 sqft

NET INTERNAL AREA (NIA)
Excludes walls and external features
Includes swimming pools, covered heat heights
67.33 sqm / 724.73 sqft

EXTERNAL STRUCTURAL FEATURES
Balconies, terraces, verandas etc.
0.00 sqm / 0.00 sqft

RESTRICTED HEAD HEIGHT
Controlled use area under 1.5m
0.18 sqm / 1.94 sqft



Spec Verified floor plans are produced in accordance with Royal Institution of Chartered Surveyors' Property Measurement Standards. Pools and gardens are illustrative only and excluded from all area calculations. Due to rounding, numbers may not add up precisely. All measurements shown for the individual room lengths and widths are the maximum points of measurements captured in the scan.

OPEN RESIDENTIAL: 70.58 sqm / 759.72 sqft
OPEN NON-RESIDENTIAL: 68.12 sqm / 733.28 sqft

spec id: 623dc6baa2540dc3dc643f



Energy Efficiency Rating		
	Current	Potential
Very energy efficient - lower running costs		
(92 plus) A		
(81-91) B		
(69-80) C		75
(55-68) D		
(39-54) E		
(21-38) F	39	
(1-20) G		
Not energy efficient - higher running costs		
England & Wales		EU Directive 2002/91/EC

Agents Note: Whilst every care has been taken to prepare these particulars, they are for guidance purposes only. All measurements are approximate and are for general guidance purposes only and whilst every care has been taken to ensure their accuracy, they should not be relied upon and potential buyers/tenants are advised to recheck the measurements

Hemmingfords Lettings
34 Upper Street
London
N1 0PN

020 3890 7470
info@hemmingfords.co.uk
www.hemmingfords.co.uk

Hemmingfords