



2 64 SOUTH STREET

ESSEX, RM1 1RB

£1,550 PCM

One bedroom apartment to rent in Romford town centre

A luxury one bedroom apartment finished to an excellent standard throughout, offering contemporary features.

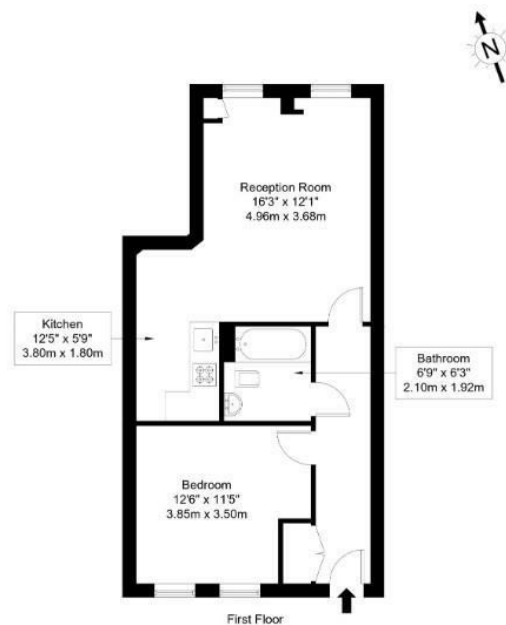
The property comprises of a larger than average open plan kitchen/ living area, double bedroom and a modern tiled bathroom.

South Street is situated in the heart of Romford town centre and offers excellent transport links in and around London/ Essex.

Hemmingfords

South Street, RM1 1RB

Approx Gross Internal Area = 50.58 sq m / 544 sq ft



Ref :

Copyright **BLEUPLAN**

The Floor plan is not to scale and measurements and areas shown are approximate and therefore should be used for illustrative purposes only. The plan has been prepared in accordance with the RICS code of Measuring Practice and whilst we have confidence in the information produced it must not be relied on. Maximum lengths and widths are represented on the floor plan. If there is any aspect of particular importance, you should carry out or commission your own inspection of the property.
Copyright © BLEUPLAN



Energy Efficiency Rating		
	Current	Potential
Very energy efficient - lower running costs		
(92 plus) A		
(81-91) B		
(69-80) C	81	82
(55-68) D		
(39-54) E		
(21-38) F		
(1-20) G		
Not energy efficient - higher running costs		
England & Wales	EU Directive 2002/91/EC	

Agents Note: Whilst every care has been taken to prepare these particulars, they are for guidance purposes only. All measurements are approximate and are for general guidance purposes only and whilst every care has been taken to ensure their accuracy, they should not be relied upon and potential buyers/tenants are advised to recheck the measurements

Hemmingfords Lettings & Sales
Second Floor
34 Upper Street
London
N1 0PN

020 3890 7470
info@hemmingfords.co.uk
www.hemmingfords.co.uk

Hemmingfords