

FLAT 118, 36, WESTERN BEACH APARTMENTS LONDON, E16 1DZ

£3,300 PCM

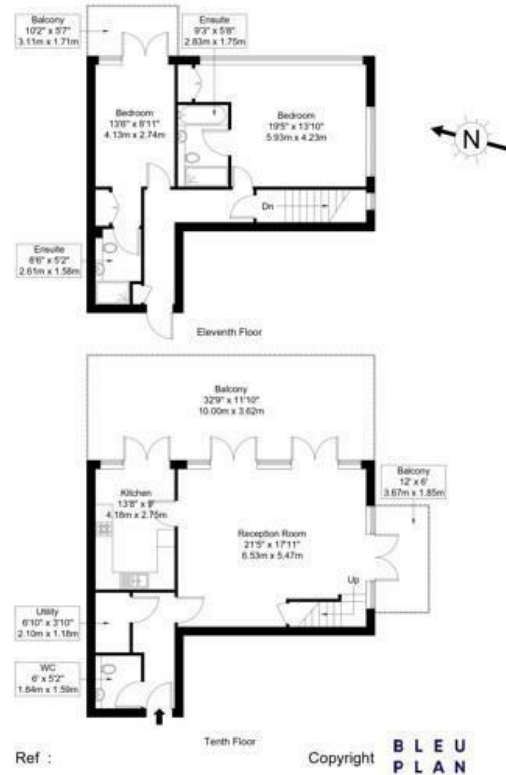
Spacious Two-Bedroom Dockside Apartment featuring three private terraces | Royal Victoria Dock, E16

This stunning property is arranged over the tenth & eleventh floors set within a secure gated development, offers contemporary living with spectacular far-reaching views over the Royal Victoria Dock.

The property features two generous double bedrooms, each with en-suite bathrooms and built-in wardrobes, providing comfort and convenience. The large open-plan kitchen and living area offers ample space for dining and entertaining, leading seamlessly onto a wrap-around private terrace — perfect for enjoying panoramic dockside views.

Hemmingfords

Approx Gross Internal Area = 118.2 sq m / 1272 sq ft
 Balconies = 48 sq m / 517 sq ft
 Total = 166.2 sq m / 1789 sq ft



Ref : Copyright **BLEU PLAN**
 The Floor plan is not to scale and measurements and areas shown are approximate and therefore should be used for illustrative purposes only. The plan has been prepared in accordance with the RICS code of Measuring Practice and whilst we have confidence in the information produced it must not be relied on. Maximum lengths and widths are represented on the floor plan. If there is any aspect of particular importance, you should carry out or commission your own inspection of the property.
 Copyright © BleuPlan



Energy Efficiency Rating		
	Current	Potential
Very energy efficient - lower running costs		
(92 plus) A		
(81-91) B	81	83
(69-80) C		
(55-68) D		
(39-54) E		
(21-38) F		
(1-20) G		
Not energy efficient - higher running costs		
England & Wales	EU Directive 2002/91/EC	

Agents Note: Whilst every care has been taken to prepare these particulars, they are for guidance purposes only. All measurements are approximate and are for general guidance purposes only and whilst every care has been taken to ensure their accuracy, they should not be relied upon and potential buyers/tenants are advised to recheck the measurements

Hemmingfords Lettings
 Second Floor
 34 Upper Street
 London
 N1 0PN

020 3890 7470
 info@hemmingfords.co.uk
 www.hemmingfords.co.uk

Hemmingfords