

55 MIDWAY HOUSE

EC1V 7HP

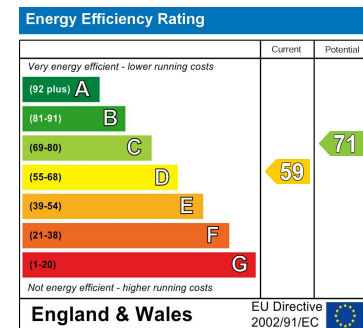
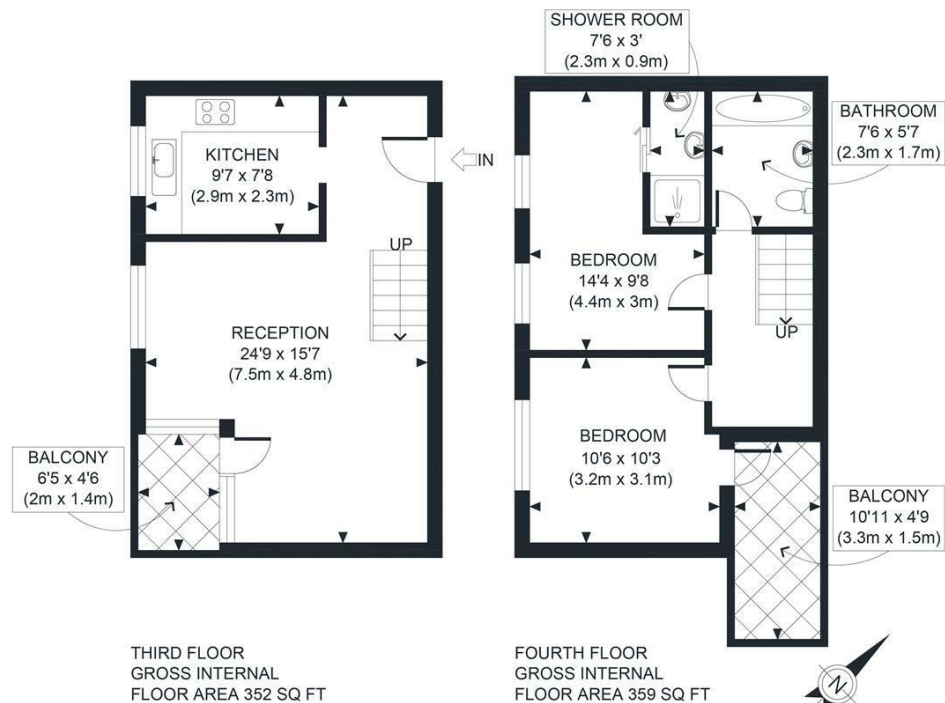
£550,000
LEASEHOLD

A Stylish Two-Bedroom Duplex with Two Balconies in the Heart of Clerkenwell – Chain-Free

Effortlessly stylish and full of personality, this two-bedroom duplex maisonette offers an exceptional blend of modern comfort, creative design, and unbeatable location. Spread across the third and fourth floors of a quiet, well-kept development in a peaceful Clerkenwell cul-de-sac, this home is a rare gem for those seeking both charm and convenience in central London.

The expansive open-plan reception is flooded in natural light from large windows and opens onto a private south-facing balcony. Warm wooden floors, flexible dining and lounge areas make this space instantly welcoming. Adjacent is a sleek, modern kitchen with high-gloss white cabinetry, integrated appliances, and leafy outlooks that add a sense of calm to everyday living.

Hemmingfords



Agents Note: Whilst every care has been taken to prepare these particulars, they are for guidance purposes only. All measurements are approximate and are for general guidance purposes only and whilst every care has been taken to ensure their accuracy, they should not be relied upon and potential buyers/tenants are advised to recheck the measurements

Hemmingfords Lettings & Sales
Second Floor
34 Upper Street
London
N1 0PN

020 3890 7470
info@hemmingfords.co.uk
www.hemmingfords.co.uk

Hemmingfords