



## A 226 LIVERPOOL ROAD LONDON, N1 1LG

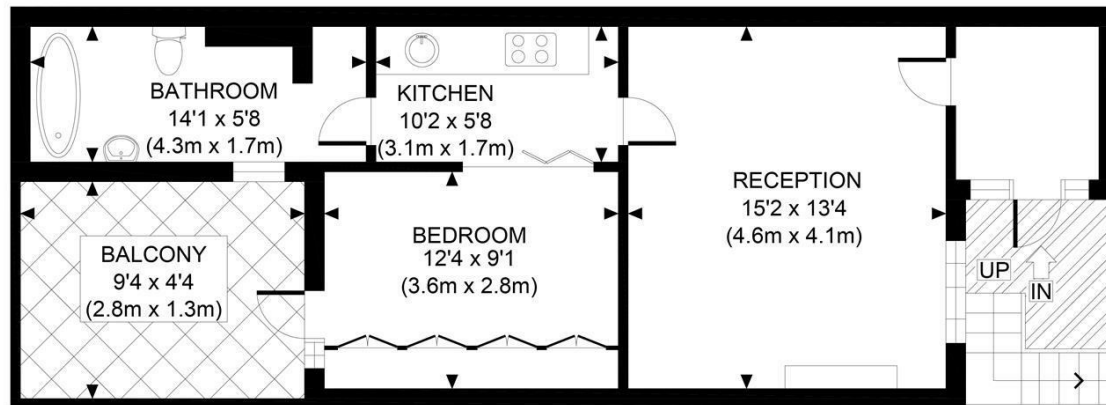
£425,000  
LEASEHOLD

Nestled in the heart of Islington, this charming lower ground floor, period apartment, spanning an impressive 507 square feet, the property boasts a spacious reception room, well-appointed bedroom, bathroom and a private patio.

One of the standout features of this apartment is the private patio, an ideal space for enjoying a morning coffee or hosting intimate gatherings with friends. The property is situated close to Upper Street, renowned for its vibrant atmosphere, eclectic shops, and diverse dining options, ensuring that you are never far from the action.

This period conversion not only offers character but also the convenience of contemporary living in a sought-after location. Whether you are a first-time buyer or looking to invest in a rental property, this apartment presents an excellent opportunity to experience the best of London living.

**Hemmingfords**



GROUND FLOOR  
GROSS INTERNAL  
FLOOR AREA 507 SQ FT



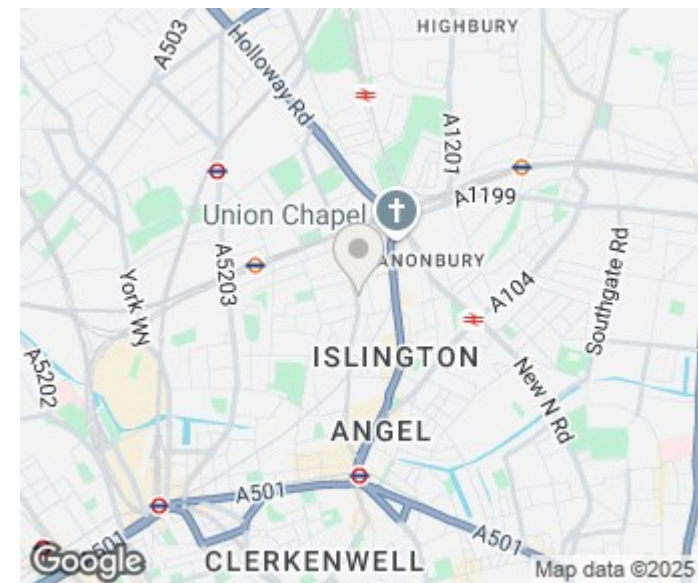
**APPROX. GROSS INTERNAL FLOOR AREA 507 SQ FT / 47 SQM**

Disclaimer: Floor plan measurements are approximate and are for illustrative purposes only. While we do not doubt the floor plan accuracy and completeness, you or your advisors should conduct a careful, independent investigation of the property in respect of monetary valuation

**LIVERPOOL ROAD**

date 08/05/25

**photoplan**



Energy Efficiency Rating		
	Current	Potential
Very energy efficient - lower running costs		
(92 plus) <b>A</b>		
(81-91) <b>B</b>		
(69-80) <b>C</b>		
(55-68) <b>D</b>		
(39-54) <b>E</b>		
(21-38) <b>F</b>		
(1-20) <b>G</b>		
Not energy efficient - higher running costs		
<b>England &amp; Wales</b>	EU Directive 2002/91/EC	

Agents Note: Whilst every care has been taken to prepare these particulars, they are for guidance purposes only. All measurements are approximate and are for general guidance purposes only and whilst every care has been taken to ensure their accuracy, they should not be relied upon and potential buyers/tenants are advised to recheck the measurements

Hemmingfords Sales & Lettings  
Second Floor  
34 Upper Street  
London  
N1 0PN

02038907470  
info@hemmingfords.co.uk  
www.hemmingfords.co.uk

**Hemmingfords**