



52 MINTERN STREET SHOREDITCH, N1 5EG

£1,950 PCM

INCLUDES HEATING AND HOT WATER A bright and spacious studio apartment benefiting from views over Shoreditch park in this modern residential development close to Old Street station. The property benefits from being fully furnished with a modern kitchen and bathroom.

The property is located in Hoxton bordering Shoreditch and amenities of Old Street. Pittfield Street runs from the property directly into Shoreditch and provides a number of cafes, bars and restaurants. The closest station is Old Street Station.

Available now on a fully furnished basis.

Hemmingfords

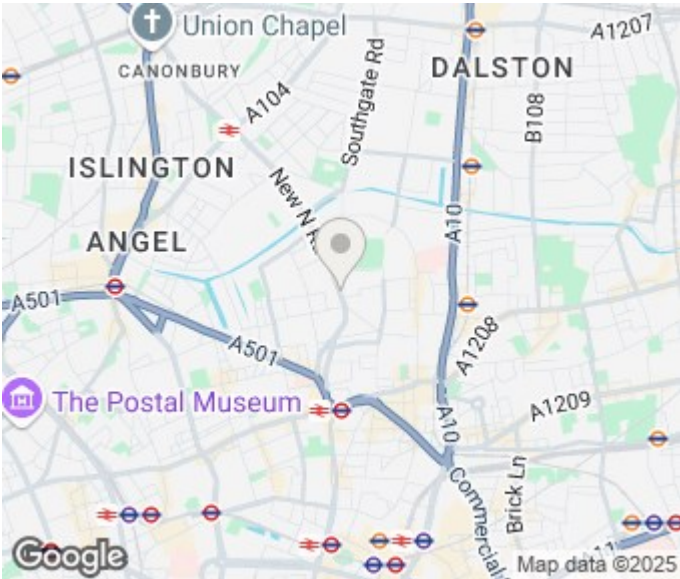
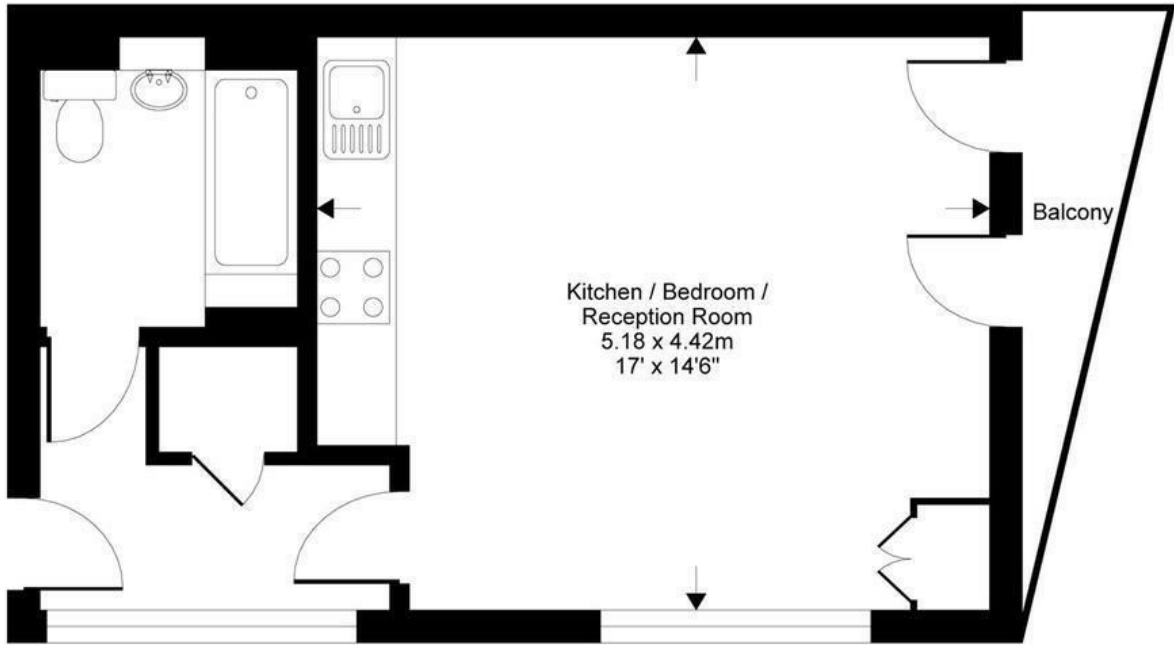
Pindoria House, 52 Mintern Street, London, N1

Gross internal floor area (approx):

32.3 sq m / 348 sq ft

For Identification only - Not to scale

Niche Communications



Energy Efficiency Rating		
	Current	Potential
Very energy efficient - lower running costs		
(92 plus) A		
(81-91) B	81	81
(69-80) C		
(55-68) D		
(39-54) E		
(21-38) F		
(1-20) G		
Not energy efficient - higher running costs		
England & Wales	EU Directive 2002/91/EC	

Agents Note: Whilst every care has been taken to prepare these particulars, they are for guidance purposes only. All measurements are approximate and are for general guidance purposes only and whilst every care has been taken to ensure their accuracy, they should not be relied upon and potential buyers/tenants are advised to recheck the measurements

Hemmingfords Lettings & Sales
Second Floor
34 Upper Street
London
N1 0PN

020 3890 7470
info@hemmingfords.co.uk
www.hemmingfords.co.uk

Hemmingfords