

Hemmingfords



## 2 Copperfield Mews London

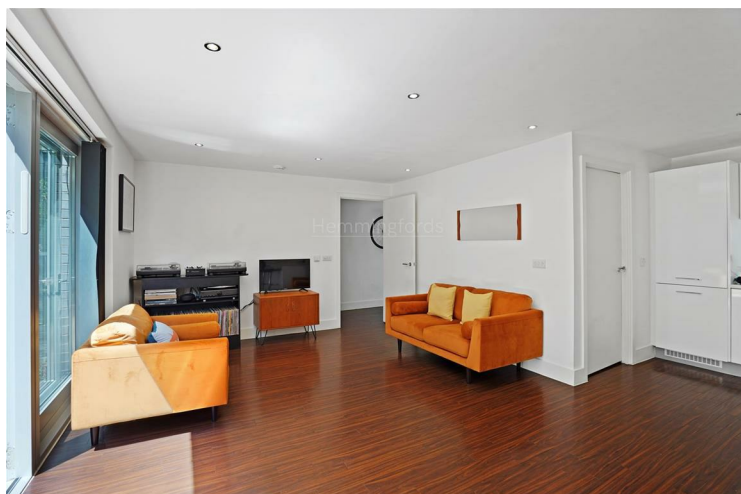
£925,000  
FREEHOLD

Discover this beautifully presented three-bedroom house, tucked away in a secure gated mews development ideally positioned between the buzzing neighbourhoods of Shoreditch and Bethnal Green.

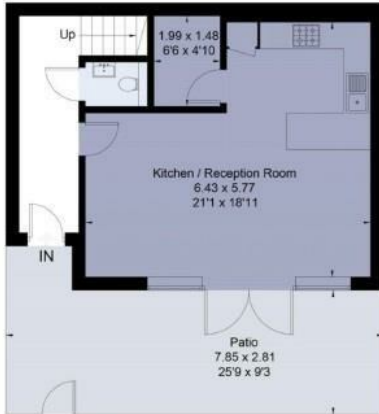
### Ground Floor

Step inside to a bright and spacious open-plan living area, seamlessly combining a stylish lounge and contemporary kitchen. Large double doors flood the space with natural light and open directly onto a private patio garden – perfect for summer entertaining or relaxing outdoors. The sleek, modern kitchen is equipped with generous storage and provides direct access to a handy utility room. A convenient cloakroom is also located off the hallway.

### First Floor



Approximate Area = 93.7 sq m / 1008 sq ft  
Including Limited Use Area (1.4 sq m / 15 sq ft)  
For identification only. Not to scale.  
© Fourwalls

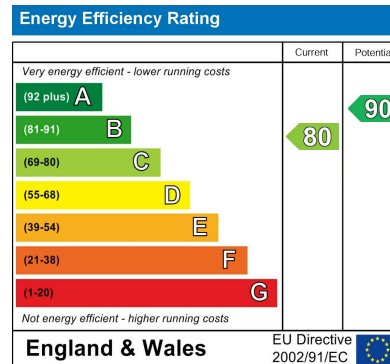
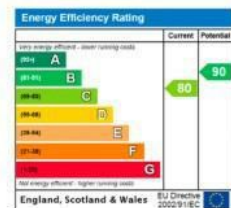


Ground Floor



First Floor

Surveyed and drawn in accordance with the International Property Measurement Standards (IPMS 2: Residential)  
fourwalls-group.com 295220



Agents Note: Whilst every care has been taken to prepare these particulars, they are for guidance purposes only. All measurements are approximate and are for general guidance purposes only and whilst every care has been taken to ensure their accuracy, they should not be relied upon and potential buyers/tenants are advised to recheck the measurements

**Hemmingfords Sales & Lettings**  
Second Floor  
34 Upper Street  
London  
N1 0PN

02038907470  
info@hemmingfords.co.uk  
www.hemmingfords.co.uk

**Hemmingfords**