



12 17 CANALSIDE SQUARE

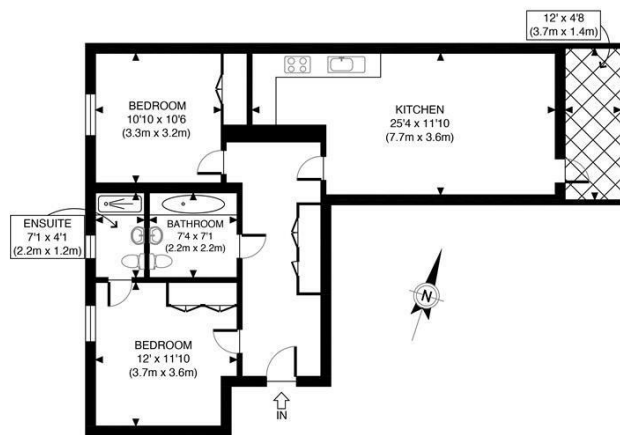
LONDON, N1 7FP

£750,000
LEASEHOLD

A beautifully presented, modern two double bedroom apartment situated on the 4th floor of this impressive development which was completed in 2016. The apartment comprises; spacious open-plan reception room with floor to ceiling windows and a private balcony with views over the square, two double bedroom with fitted wardrobes and two bathrooms (one en-suite)

Canalside Square affords superb access to an absolute wealth of local shops, bars and eateries, with particular note to those on Camden Passage, Upper Street and Exmouth Market. Angel Underground (Northern Line) provides convenient access to the City, with the transport hub that is Kings Cross/ St Pancras International just 1 stop on the Underground, providing superb links to travel around London and to mainland Europe. The bus routes on St John Street, Upper Street, Pentonville Road and City Road are all close by, as are the scenic walks of the canal. The 'Square Mile' of the City is within easy reach by bike or by foot.

Hemmingfords



| | |
|---|------------------|
| APPROX. GROSS INTERNAL FLOOR AREA 784 SQ FT / 73 SQM | Canalside Square |
| Disclaimer: Floor plan measurements are approximate and are for illustrative purposes only. While we do not doubt the floor plan accuracy and completeness, you or your advisors should conduct a careful, independent investigation of the property in respect of monetary valuation | date: 31/07/24 |
| | photoplan |



| Energy Efficiency Rating | | |
|---|-------------------------|-----------|
| | Current | Potential |
| Very energy efficient - lower running costs | | |
| (92 plus) A | | |
| (81-91) B | 85 | 85 |
| (69-80) C | | |
| (55-68) D | | |
| (39-54) E | | |
| (21-38) F | | |
| (1-20) G | | |
| Not energy efficient - higher running costs | | |
| England & Wales | EU Directive 2002/91/EC | |

Agents Note: Whilst every care has been taken to prepare these particulars, they are for guidance purposes only. All measurements are approximate and are for general guidance purposes only and whilst every care has been taken to ensure their accuracy, they should not be relied upon and potential buyers/tenants are advised to recheck the measurements

Hemmingfords Sales & Lettings
Second Floor
34 Upper Street
London
N1 0PN

02038907470
info@hemmingfords.co.uk
www.hemmingfords.co.uk

Hemmingfords